

工程机械用

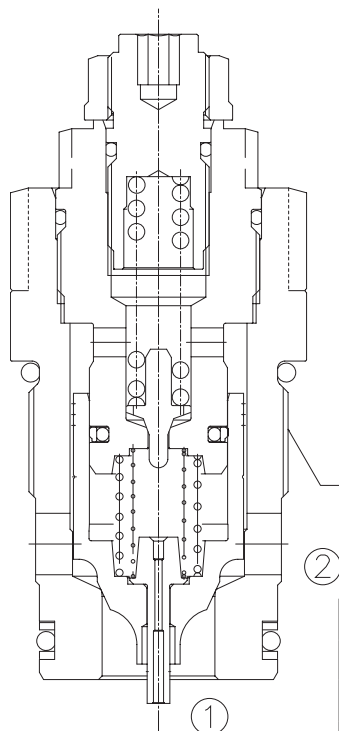
LPOSRV2-M36

先导溢流阀带反向单向阀功能
(补油开启压力 2bar)

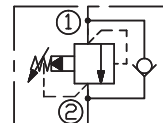
说明 DESCRIPTION

A pilot-operated pressure limitation and feed valve.

先导座阀式溢流阀



SYMBOL



Flow:	300L/min
Max. Pressure:	42Mpa
36mm HEX Torque:	145-155Nm
Cavity:	Rexroth-LM, see page(M-16)

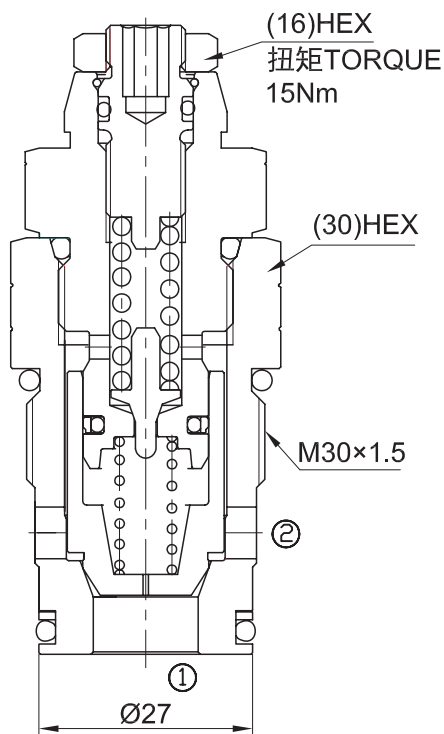
MHDBV22K2-3X420VLG

先导式溢流阀

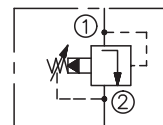
说明 DESCRIPTION

A pilot-operated pressure relief valve.

先导座阀式溢流阀



SYMBOL



Flow:	200L/min
Max. Pressure:	42Mpa
32mm HEX Torque:	90-100Nm
Cavity:	Rexroth-LG, see page(M-15)