

LCBAH

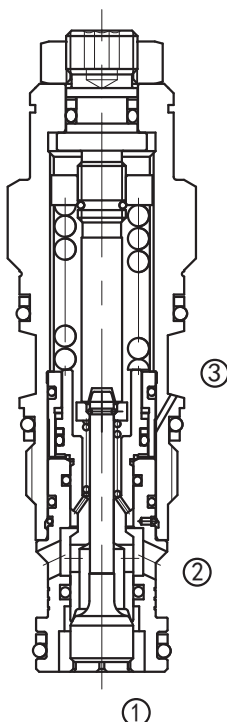
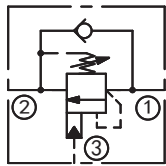
平衡阀

极限流型 /Ultra-Restrictive

说明 DESCRIPTION

A cartridge-style ultra-restrictive counterbalance valve
极限流型平衡阀

SYMBOL



工作 OPERATION

Counterbalance valves with pilot assist are meant to control an overrunning load. The check valve allows free flow from port ② to port ① while a direct-acting, pilot-assisted relief valve controls flow from port ① to port ②. Pilot assist at port ③ lowers the effective setting of the relief valve at a rate determined by the pilot ratio.

带先导开启平衡阀用于控制超驰负载。它允许油液从②口到①口单向自由流动；油液经直动，先导辅助从①口溢流到②口，③口是溢流辅助控制口，按控制比降低溢流功能的有效设定值。

特性 FEATURES

- Counterbalance valves should be set at least 1.3 times the maximum load induced pressure.

最大设定压力至少为最大负载压力的 1.3 倍。

- Restrictive valves have no relief capacity other than as a thermal relief.

全限流阀泄压流量不足，但是具备热泄功能。

- Backpressure at port ② adds to the effective relief setting at a ratio of 1 plus the pilot ratio times the backpressure.

②口的背压按“控制比 +1”的倍数加到溢流阀的设定值上即增加值 = (1+ 控制比) × 压力值。

- Reseat exceeds 85% of set pressure when the valve is standard set. Setting lower than the standard set pressure may result in lower reseal percentages.

标准设定时，闭合压力值大于设定压力值的 85%；低于标准设定，则闭合压力值的百分比相应降低。

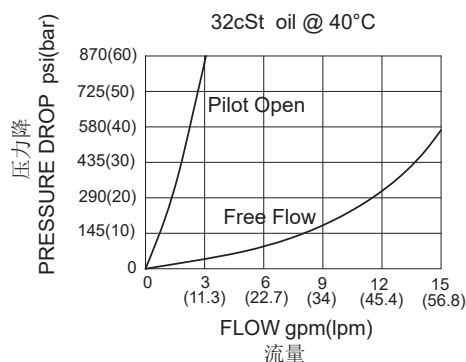
- Factory pressure setting established at 30cc/min(2 in3/min).

工厂的设定是指当溢流阀开启（流量为 30cc/min）时的压力。

技术参数 SPECIFICATIONS

| | |
|---|--|
| 最大设定值(Max. Setting): | 350bar |
| 最大负载(Max. Recommended Load Pressure at Max. Setting): | 270bar |
| 流量(Flow) : | See PRESSURE DROP VS.FLOW graph. |
| 内泄漏(Internal Leakage): | 5 drops/min.(滴/分) |
| 控制比(Pilot Rate): | 10:1 |
| 温度(Temperature): | -40°F to +250°F(-40°C to +120°C) |
| 过滤(Filtration): | See Page (参见) N-1 |
| 油液(Fluids): | Mineral-based fluids with viscosities of 7.4 to 420 cSt. (矿物油粘度) |
| 插孔(Cavity): | SUN T-11A,See page M-6 |
| 阀块材料(Body Material): | 6061-T6 aluminum alloy rated to 207bar, Steel & Ductile iron rated to 350bar 6061-T6铝，允许使用最大压力207bar 钢和球铁允许使用最大压力350bar |

压力 - 流量曲线 PRESSURE DROP VS.FLOW



订货代号 TO ORDER

LCB * * - * * * - * *

1 2 3 4 5 6 7

1 功能

LCB= 平衡阀
Counterbalance Cartridge Valve

2 流量 Flow

A=10L/min

3 控制比 Pilot Ratio

H=10:1

4 控制方式 Control

L= 标准螺钉调节
Standard Screw Adjustment

5 弹簧调压范围 Spring Ranges

J=2000-5000psi(140-350bar)
Preset:3000psi(210bar)(Check:1.7bar)
K=1000-2500psi(70-175bar)
Preset:2000psi(140bar)(Check:1.7bar)
C=2000-5000psi(140-350bar)
Preset:3000psi(210bar)(Check:0.3bar)
D=1000-2500psi(70-175bar)
Preset:2000psi(140bar)(Check:0.3bar)

6 油封 Seal Kits

N= 丁晴橡胶 Buna N
V= 氟橡胶 Viton

7 阀块油口 Body Porting

空白 Blank= 不带阀块 None
6T=SAE6
8T=SAE8
3G=G 3/8
4G=G 1/2

※ 阀块详见章节 K-17—K-22
其它螺纹油口也是可选择的
Other Porting is Available

G

安装尺寸 INSTALLATION DIMENSIONS

Unit=Millimeters

Number of Counter-clockwise Turns
全调3.75圈

