

LSV2-M20-4RCO

二位四通电磁阀 滑阀型

说明 DESCRIPTION

A solenoid operated, 4-way, 2-position, spool-type cartridge valve.

二位，四通，滑阀式电磁阀

工作 OPERATION

When de-energized, the valve allows flow from ③ to ④ or from ④ to ③ and from ② to ① or from ① to ② . When energized, the cartridge's spool shifts to allow flow from ③ to ② or from ② to ③ and from ④ to ① or from ① to ④ .

失电时，③和④通，②与①通；得电时，③和②通，④与①通。

手控应急 Operation of Manual Override Option

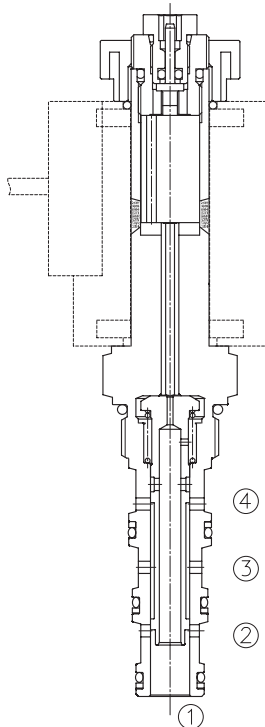
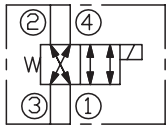
M: To override, push button in to activate. To return to normal valve function, release button.

MK: To override, twist clockwise 2 turns. In this position, the valve will allow flow ③ to ② and from ④ to ① . To return to normal operation, twist counterclockwise 2 turns.

M: 请用工具按下并按住按钮，③和②通，④与①通；松开按钮，返回常态。

MK: 顺时针旋转旋钮 2 圈，③和②通，④与①通；逆时针旋转旋钮 2 圈，返回常态。

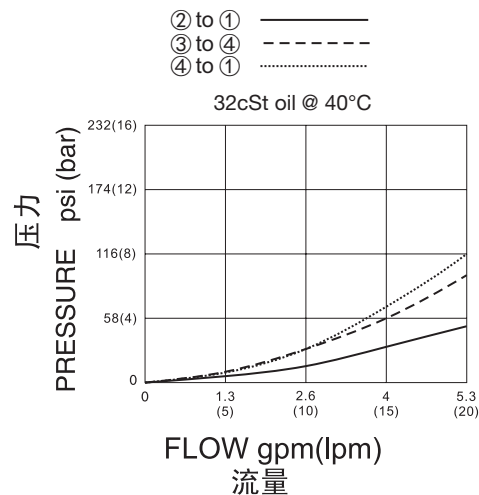
SYMBOL



技术参数 SPECIFICATIONS

工作压力(Operating Pressure):	350bar
流量(Flow):	See PERFORMANCE CHARACTERISTIC graph.
内泄漏(Internal Leakage):	82cc/min. (毫升/分) max. at 350bar
温度(Temperature):	-40°F to +212°F(-40°C to +100°C)
线圈额定负载(Coil Duty Rating):	Continuous from 85% to 115% of nominal voltage(连续工作电压)
过滤(Filtration):	See page (参见) N-1
油液(Fluids):	Mineral-based fluids with viscosities of 7.4 to 420 cSt.(矿物油粘度)
插孔(Cavity):	HYDAC 08140,See page M-22
阀块材料(Body Material):	Steel & Ductile iron rated to 350bar 钢和球铁允许使用最大压力350bar

压力 – 流量曲线 PRESSURE DROP VS.FLOW



订货代号 TO ORDER

LSV2 - M20 - 4 RCO - * - * * - * *

┌───┐
┌───┐
┌──┐
┌──┐
┌──┐
┌──┐
┌──┐
┌──┐

1
2
3
4
5
6
7
8

<p>1 功能 LSV2= 电磁阀 Solenoid Valve</p>	<p>6 电压 Voltage 1=12 VDC 2=24 VDC 3=110 VAC 4=220 VAC</p>	<p>8 阀块油口 Body Porting 空白 Blank= 不带阀块 None 8T=SAE 8 3G=G 3/8 其它螺纹油口也是可选择的 Other Porting Is Available</p>
<p>2 规格 Size M20=M20 规格</p>	<p>7 线圈连接 Coil Connection D= Double Lead 双线 H= Hirschmann 三插 ER= Deutsch Connector(Water-proof Coil) 德意志插座(防水线圈)</p>	
<p>3 流道类型 Flow Path 4= 四通</p>		
<p>4 模式 RCO=Reverse Crossover</p>		
<p>5 手控应急 空白 Blank= 无手控应急 None M= 手控应急 Manual Override</p>		

安装尺寸 INSTALLATION DIMENSIONS

Coil Must Be Installed With Letter Up
安装线圈时，字母必须朝上。

Unit=Millimeters

