

MHDR10K-M35-60

直动式溢流阀

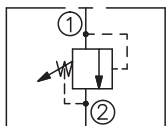
说明 DESCRIPTION

A cartridge-style direct-acting poppet-type relief valve
直动座阀式溢流阀

工作 OPERATION

Flow is blocked from ① to ② until pressure increases to meet the selected valve setting, lifting the poppet from its seat and allowing relief flow through ② to tank. Pressure at ② is additive to the relief setting of the valve. The unique poppet design provides enhanced stability at all flows and pressures.
当①口压力达到设定压力时，从①口到②口打开，以防止系统过载。②口的背压叠加到弹簧设定值上。独特的阀芯设计增强了溢流阀的稳定性。

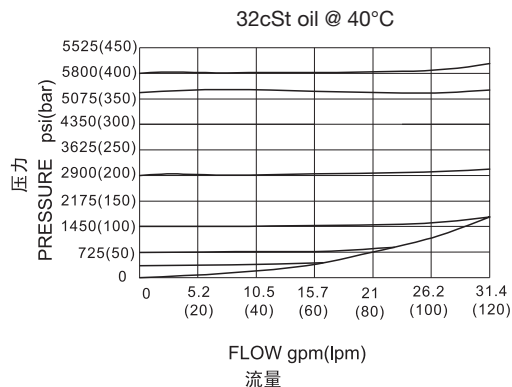
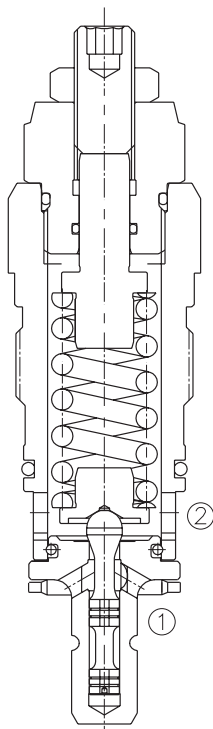
SYMBOL



技术参数 SPECIFICATIONS

工作压力(Operating Pressure):	400bar
流量(Flow):	See PRESSURE DROP VS. FLOW graph.
内泄漏(Internal Leakage):	5 drops/min(滴/分). max. to 80% of nominal setting
闭合压力(Reseat Pressure):	80% of crack pressure 开启压力 (crack pressure at 0.95 lpm /0.25 gpm)
弹簧调压范围(Standard Spring Ranges):	25 to 400 bar; preset(预设定)200 bar
温度(Temperature):	-40°F to +250°F(-40°C to +120°C)
过滤(Filtration):	See page (参见) N-1
油液(Fluids):	Mineral-based fluids with viscosities of 7.4 to 420 cSt.(矿物油粘度)
插孔(Cavity):	Rexroth - DBD -10K, See page M-12
阀块材料(Body Material):	Steel & Ductile iron rated to 350bar 钢和球铁允许使用最大压力350bar

压力 – 流量曲线 PRESSURE DROP VS.FLOW



订货代号 TO ORDER

MHDR 10K – M35 – 60 / * * * * – * *



- | | | |
|--|--|--|
| <p>1 功能
MHDR= 直动式溢流阀
Direct-acting Relief Valve</p> | <p>3 压力范围 Spring Ranges
60=360-6000psi(25-400bar)
Preset:2900psi(200bar)</p> | <p>5 阀块油口 Body Porting
空白 Blank= 不带阀块 None
8T=SAE 8
10T=SAE 10
4G=G 1/2
6G=G 3/4</p> |
| <p>2 规格 Size
10K-M35=10K-M35 规格</p> | <p>4 设定压力 Settings In Bar
空白 Blank= 预设设定 Preset
例 Example:0250=250bar</p> | |

其它螺纹油口也是可选择的
Other Porting is Available

安装尺寸 INSTALLATION DIMENSIONS

Unit=Millimeters

