

LDPC-08

液压锁

专利号 :201110204290.8

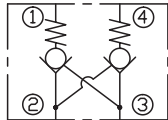
说明 DESCRIPTION

A cartridge-style dual pilot-operated check valve
 螺纹插装双向液压锁

工作 OPERATION

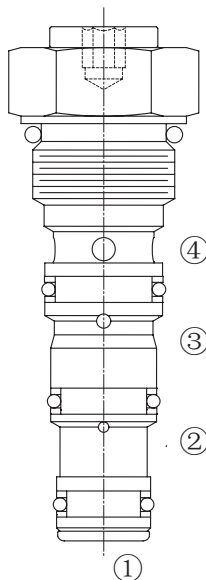
The valve will block flow from ① to ② , and from ④ to ③ . Flow is allowed in the opposite direction when pressure is applied to port ② and/or ③ . The valve has a 2.5:1 pilot ratio, so at least 40 percent of the load pressure at port ① or ④ is required at the pilot lines (port ③ or ②) to open the flow passage to allow flow from port ① or ④ .
 ①到②, ④到③关闭; 在相反方向, ②到①, ③到④打开。有 2.5:1 的控制比, 所以在②口或③口的压力超过④口或①口的负载压力的 40% 时, ④到③, ①到②打开。

SYMBOL

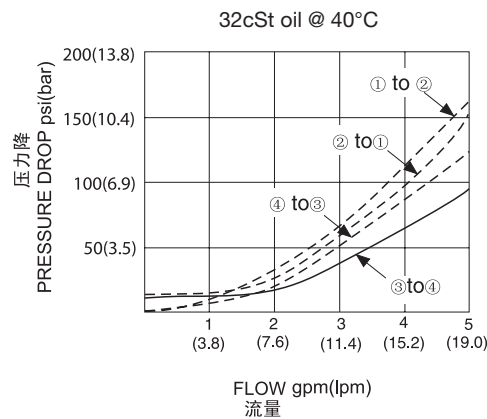


技术参数 SPECIFICATIONS

工作压力(Operating Pressure):	207bar
流量(Flow):	See PRESSURE DROP VS.FLOW graph.
单向阀泄漏(Check Valve Leakage):	2 drops/min(滴/分). at 207bar
开启压力(Crack Pressures):	0.4=0.4bar 3.4=3.4bar
控制比(Pilot Ratio):	2.5:1
温度(Temperature):	-40°F to +250°F(-40°C to +120°C)
过滤(Filtration):	See page (参见) N-1
油液(Fluids):	Mineral-based fluids with viscosities of 7.4 to 420 cSt.(矿物油粘度)
插孔(Cavity):	08-4, See page M-1
阀块材料(Body Material):	6061-T6 aluminum alloy rated to 207bar, Steel & Ductile iron rated to 350bar 6061-T6铝, 允许使用最大压力207bar 钢和球铁允许使用最大压力350bar



压力 - 流量曲线 PRESSURE DROP VS.FLOW



订货代号 TO ORDER

LDPC - 08 - * * - * *

┌───┐
┌──┐
┌──┐
┌──┐
1
2
3
4

1 功能
LDPC= 液压锁 Dual Pilot-Operated Cartridge Check Valve

3 开启压力 Cracking Pressure
0.4=0.4bar
3.4=3.4bar

4 阀块油口 Body Porting
空白 Blank= 不带阀块 None
4T=SAE4
6T=SAE6
2G=G 1/4
3G=G 3/8

2 规格 Size
08=08 规格

※ 阀块详见章节 K-3
其它螺纹油口也是可选择的
Other Porting is Available

D

安装尺寸 INSTALLATION DIMENSIONS

Unit=Millimeters

