

# LDPCC

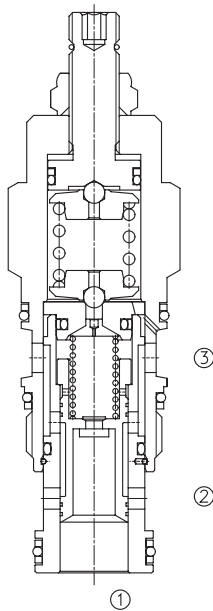
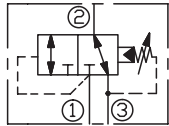
## 二位三通液控换向阀

### 说明 DESCRIPTION

A cartridge-style 3-way pilot-operated spool-type internal-vent directional valve

二位，三通，液控，内排，螺纹  
插装方向阀

### SYMBOL



### 工作 OPERATION

Pilot-operated, 3-way directional cartridges valve, normally ① blocked, ② to ③ open, the valve shifts when the pressure differential between port ① and port ③ exceeds the setting.

Pressure at port ③ is directly additive to the setting of the valve. Because of this, port ③ may not be useable as a work port in your circuit. Port ③ can be blocked to prevent the valve from shifting and Maximum pressure at port ③ should be limited to 3000 psi (210 bar).

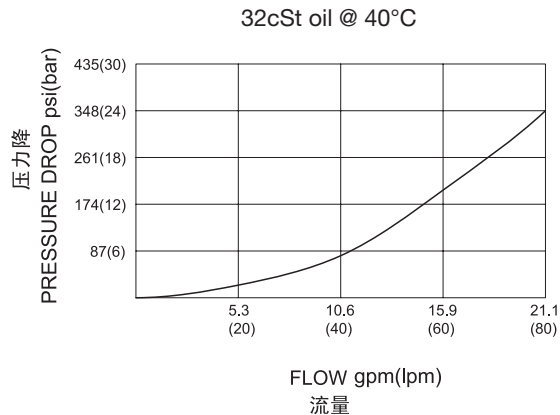
常态，②到③通，①口不通；当①口与③口的压力差超过弹簧的设定时，①到②通，③口不通。

③口压力直接增加阀的设定压力，因此不能作为工作口。堵住③口能够阻止阀换向并且③口最大压力不得超过 210 bar。

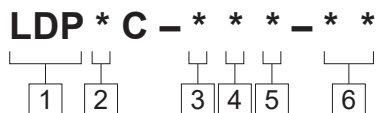
### 技术参数 SPECIFICATIONS

工作压力(Operating Pressure):	350bar
流量(Flow):	See PRESSURE DROP VS.FLOW graph.
内泄漏(Internal Leakage):	15 cc/min. max. at 70 bar
弹簧调压范围(Standard Spring Ranges):	
A:	100 - 3000 psi (7 - 210 bar), Preset预设:1000 psi (70 bar)
B:	50 - 1500 psi (3.5 - 105 bar), Preset预设:1000 psi (70 bar)
D:	25 - 800 psi (1.7 - 55 bar), Preset预设: 400 psi (28 bar)
E:	25 - 400 psi (1.7 - 28 bar), Preset预设: 200 psi (14 bar)
H:	35 - 3000 psi (2.4 - 210 bar), Preset预设:1000 psi (70 bar)
W:	100 - 4500 psi (7 - 315 bar), Preset预设:1000 psi (70 bar)
温度(Temperature):	-40°F to +250°F(-40°C to +120°C)
过滤(Filtration):	See page (参见) N-1
油液(Fluids):	Mineral-based fluids with viscosities of 7.4 to 420 cSt.(矿物油粘度)
插孔(Cavity):	SUN T-2A, See page M-6
阀块材料(Body Material):	Steel & Ductile iron rated to 350bar 钢和球铁允许使用最大压力350bar

### 压力 - 流量曲线 PRESSURE DROP VS.FLOW



订货代号 TO ORDER



**1 功能**  
LDP= 二位三通液控换向阀  
Piloted Three-way Spool Directional Valve

**5 油封 Seal Kits**  
N= 丁晴橡胶 Buna N  
V= 氟橡胶 Viton

**6 阀块油口 Body Porting**  
空白 Blank= 不带阀块 None  
8T=SAE8  
10T=SAE10  
3G=G 3/8  
4G=G 1/2

**2 流量 Flow**  
C=60L/min.

**3 控制方式 Control**  
L=Standard Screw Adjustment

**4 弹簧调压范围 Spring Ranges**  
A: 100-3000psi(7 - 210bar), Preset:(1000psi)70bar  
B 50 -1500psi(3.5-105bar), Preset:(1000psi)70bar  
D: 25 -800 psi(1.7-55 bar), Preset:(400 psi)28bar  
E: 25 -400 psi(1.7-28 bar), Preset:(200 psi)14bar  
H: 35 -3000psi(2.4-210bar). Preset:(1000psi)70bar  
W: 100-4500psi(7 - 315bar), Preset:(1000psi)70bar  
Factory Pressure setting established at 15L/min;  
工厂的设定是指换向阀开启 (流量为 15L/min) 时的压力;

※ 阀块详见章节 K-23—K-24  
其它螺纹油口也是可选择的  
Other Porting is Available

安装尺寸 **INSTALLATION DIMENSIONS**

Unit=Millimeters

