

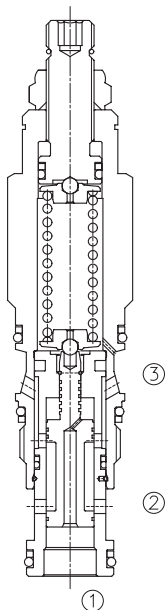
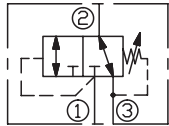
LDRBC

二位三通液控换向阀

说明 DESCRIPTION

A cartridge-style 3-way direct-acting spool-type directional valve
二位, 三通, 直动式, 螺纹插装
方向阀

SYMBOL



工作 OPERATION

Direct-acting, 3-way directional cartridges (① blocked, ② to ③ open) are switching devices typically used in moderate flow circuits. They can be used by themselves or to actuate larger pilot-operated directional cartridges or logic cartridges. The valve shifts when the pressure differential between port ① and port ③ exceeds the setting. Pressure at port ③ is directly additive to the setting of the valve. Because of this, port ③ may not be useable as a work port in your circuit.

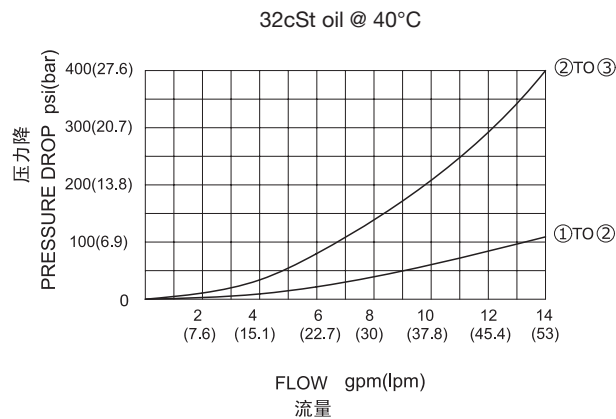
直动式三通方向阀; 常态, ② to ③打开, ①口关闭; 当在①口与③口的压力差超过设定值时, ①口到②口打开, ③口关闭。

油口③压力直接增加阀的设定压力, 因此不能作为工作口。

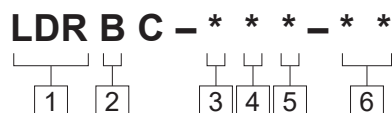
技术参数 SPECIFICATIONS

工作压力(Operating Pressure):	350bar
流量(Flow):	See PRESSURE DROP VS.FLOW graph.
内泄漏(Internal Leakage):	30 cc/min. at 70 bar
开启压力(Crack Pressures):	A: 35 -210 bar, Preset预设:70 bar B: 3.5 -105 bar, Preset预设:14 bar D: 1.7 - 55 bar, Preset预设:14 bar E: 1.7 - 28 bar, Preset预设:14 bar S: 1.7 - 14 bar, Preset预设:14 bar W: 50 -315 bar, Preset预设:70 bar
温度(Temperature):	-40°F to +250°F(-40°C to +120°C)
过滤(Filtration):	See page (参见) N-1
油液(Fluids):	Mineral-based fluids with viscosities of 7.4 to 420 cSt.(矿物油粘度)
插孔(Cavity):	SUN T-11A, See page M-6
阀块材料(Body Material):	Steel & Ductile iron rated to 350bar 钢和球铁允许使用最大压力350bar

压力 - 流量曲线 PRESSURE DROP VS.FLOW



订货代号 TO ORDER



1 功能
LDR= 二位三通液控换向阀
Piloted Three-way Spool Directional Valve

5 油封 Seal Kits
N= 丁晴橡胶 Buna N
V= 氟橡胶 Viton

6 阀块油口 Body Porting
空白 Blank= 不带阀块 None
6T=SAE6
8T=SAE8
3G=G 3/8
4G=G 1/2

2 流量 Flow
B=28L/min.

3 控制方式 Control
L=Standard Screw Adjustment

4 弹簧调压范围 Spring Ranges
A: 500-3000psi(35-210bar), Preset:(1000psi)70bar
B 50-1500psi(3.5-105bar), Preset(200psi)14bar
D: 25-800psi(1.7-55bar), Preset(200psi)14bar
E: 25-400psi(1.7-28bar), Preset(200psi)14bar
S: 25-200psi(1.7-14bar). Preset(200psi)14bar
W: 750-4500psi(50-315bar), Preset(1000psi)70bar
Factory Pressure setting established at 15L/min;
工厂的设定是指换向阀开启 (流量为 15L/min) 时的压力;

※ 阀块详见章节 K-17-K-22
其它螺纹油口也是可选择的
Other Porting is Available

安装尺寸 **INSTALLATION DIMENSIONS**

Unit=Millimeters

