

LDRF

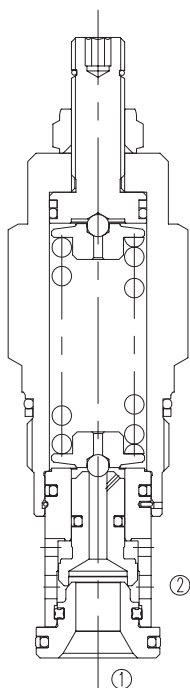
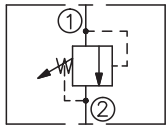
直动式溢流阀

说明 DESCRIPTION

A cartridge-style direct-acting relief valve

直动式溢流阀

SYMBOL



工作 OPERATION

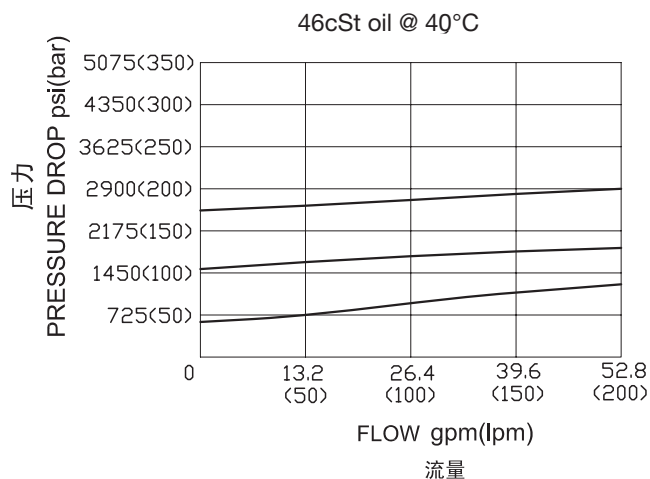
The valve is normally closed, pressure-limiting valves used to protect hydraulic components from pressure transients. When the pressure at the inlet (port ①) reaches the valve setting, the valve starts to open to tank (port ②), throttling flow to limit the pressure rise. These valves are smooth and quiet, essentially zero leak, dirt tolerant, immune to silting and are very fast.

此阀为常闭压力限制阀，常用来保护液压元件，以防止其受瞬态压力的冲击。当压力在进口（油口①）达到阀的设定值，阀开始向油箱（油口②）溢流，节流以限制压力上升。此类阀调节平稳、噪声小，基本为零泄漏，抗油污能力强，防堵塞并且响应速度快。

技术参数 SPECIFICATIONS

| | |
|---|--|
| 工作压力(Operating Pressure): | 350bar |
| 流量(Capacity): | See PRESSURE DROP VS.FLOW graph |
| 回座时最大泄漏(Maximum valve leakage at reseal): | 10 drops/min(滴/分) |
| 闭合压力(Reseat Pressure): | >80% of setting pressure(设定压力) |
| 弹簧调压范围(Standard Spring Ranges): | A 35-210 bar; Preset(预设):70bar B 20-105 bar; Preset(预设):70bar C 70-420 bar; Preset(预设):70bar D 14- 55 bar; Preset(预设):28bar E 7- 28 bar; Preset(预设):14bar W 55-315 bar; Preset(预设):70bar S 3.5- 14 bar; Preset(预设): 7bar |
| 温度(Temperature): | -40°F to +250°F(-40°C to +120°C) |
| 过滤(Filtration): | See page (参见) N-1 |
| 油液(Fluids): | Mineral-based fluids with viscosities of 7.4 to 420 cSt.(矿物油粘度) |
| 插孔(Cavity): | SUN T-3A, See page M-9 |
| 阀块材料(Body Material): | Steel & Ductile iron rated to 350bar 钢和球铁允许使用最大压力350bar |

压力 - 流量曲线 PRESSURE DROP VS.FLOW



订货代号 TO ORDER

LDR F - * * * - * *

1
2
3
4
5
6

- | | | |
|--|--|--|
| <p>1 功能 LDR= 直动式溢流阀 Direct-Acting Relief Valve</p> | <p>4 弹簧调压范围 Spring Ranges A=500-3000psi(35-210bar) Preset:1000psi(70bar) B=300-1500psi(20-105bar) Preset:1000psi(70bar) C=1000-6000psi(70-420bar) Preset:1000psi(70bar) D=200-800psi(14-55bar) Preset:400psi(28bar) E=100-400psi(7-28bar) Preset:200psi(14bar) W=800-4500psi(55-315bar) Preset:1000psi(70bar) S=50-200psi(3.5-14bar) Preset:100psi(7bar) Factory pressure setting established at 15L/min; 工厂的设定是指溢流阀开启 [流量为 15L/min] 时的压力;</p> | <p>6 阀块油口 Body Porting 空白 Blank= 不带阀块 None 8T=SAE8 10T=SAE10 3G=G 3/8 4G=G 1/2</p> |
| <p>2 流量 Capacity F=200L/min</p> | <p>5 油封 Seal Kits N= 丁晴橡胶 Buna N V= 氟橡胶 Viton</p> | <p>※ 阀块详见章节 K-15 其它螺纹油口也是可选择的 Other Porting is Available</p> |
| <p>3 控制方式 Control L= 标准螺钉调节 Standard Screw Adjustment</p> | | |

安装尺寸 INSTALLATION DIMENSIONS

Unit=Millimeters

