

# LDRV8-10

## 差动式溢流阀

### 说明 DESCRIPTION

A cartridge-style direct-acting differential area poppet-type relief valve

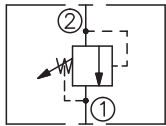
差动座阀式溢流阀

### 工作 OPERATION

The valve blocks flow from ② to ① until sufficient pressure is present at ② to force the poppet from its seat.

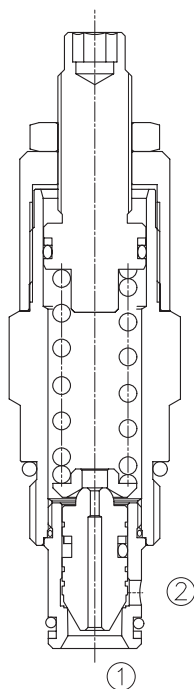
当②口压力达到设定压力时，从②口到①口打开，以保持系统压力不超过设定值。

### SYMBOL

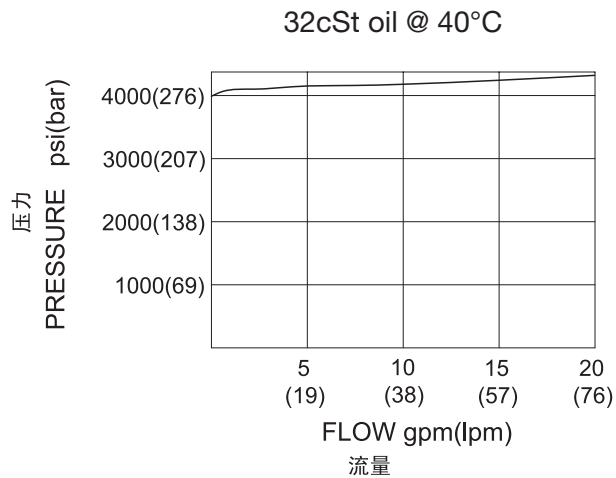


### 技术参数 SPECIFICATIONS

工作压力(Operating Pressure):	350bar
流量(Flow):	See PRESSURE DROP VS. FLOW graph.
内泄漏(Internal Leakage):	5 drops/min(滴/分). max. to 80% of nominal setting
闭合压力(Reseat Pressure):	85% of crack pressure 开启压力 (crack pressure at 0.95 lpm /0.25 gpm)
弹簧调压范围(Standard Spring Ranges):	38 to 350 bar, preset 预设: 175bar
温度(Temperature):	-40°F to +250°F(-40°C to +120°C)
过滤(Filtration):	See page (参见) N-1
油液(Fluids):	Mineral-based fluids with viscosities of 7.4 to 420 cSt.(矿物油粘度)
插孔(Cavity):	10-2, See page M-2
阀块材料(Body Material):	Steel & Ductile iron rated to 350bar 钢和球铁允许使用最大压力350bar



### 压力 - 流量曲线 PRESSURE DROP VS.FLOW



订货代号 TO ORDER

**LDRV8 - 10 - \* \* - \* / \*\*\*\* - \* \***

┌───┐
┌──┐
┌──┐
┌──┐
┌──┐
┌──┐

1
2
3
4
5
6

- |   |  |   |
|---|--|---|
| <p><b>1 功能</b><br/>LDRV8= 差动式溢流阀<br/>Direct-Acting Differential Area<br/>Poppet-Type Relief Valve</p> | <p><b>4 调节 Adjustment</b><br/>K= 调节手轮 1-1/2'Dia Knob<br/>内六角调节杆 (Omit for 1/4' Hex Allen head)</p> | <p><b>6 阀块油口 Body Porting</b><br/>空白 Blank= 不带阀块 None<br/>6T=SAE6<br/>8T=SAE8<br/>3G=G 3/8<br/>4G=G 1/2</p> |
| <p><b>2 规格 Size</b><br/>10=10 规格</p>  | <p><b>5 设定压力 Setting In Bar</b><br/>空白 Blank= 预设定 Preset<br/>例 Example:0150=150bar</p>             | <p>※ 阀块详见章节 K-4<br/>其它螺纹油口也是可选择的<br/>Other Porting is Available</p>   |
| <p><b>3 弹簧调压范围 Spring Ranges</b><br/>50=550-5000psi(38-350bar)<br/>Preset:2540psi(175bar)</p>         |  |   |

安装尺寸 INSTALLATION DIMENSIONS

Unit=Millimeters

