

LEP-08-35

外控逻辑阀

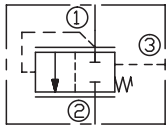
说明 DESCRIPTION

A cartridge-style non-adjustable logic element with external pilot
外控逻辑阀

工作 OPERATION

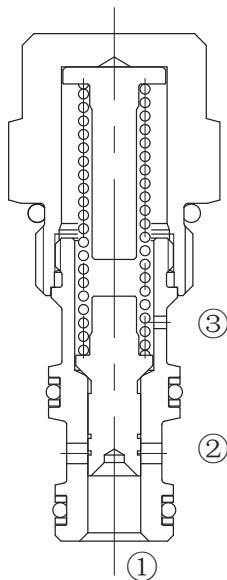
When pressure at ① rises above the selected spring bias pressure against the spool, the valve shifts to allow flow from ① to ② . Pilot pressure at ③ is additive to the spring bias pressure. The valve may be used in switching or compensation type applications.
当①口的油压克服弹簧设定压力时，油液从①口到②口流动。③口压力叠加到弹设定值上。应用在开关或者补偿场合。

SYMBOL

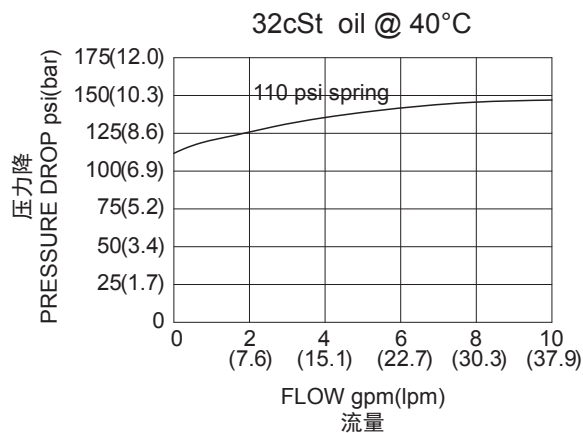


技术参数 SPECIFICATIONS

最大工作压力 (Max. Operating Pressure):	345bar
流量 (Flow) :	See PRESSURE DROP VS.FLOW graph.
内泄漏 (Internal Leakage):	115 ml/min. max. at 345 bar
温度 (Temperature):	-40°F to +250°F(-40°C to +120°C)
过滤 (Filtration):	See Page (参见) N-1
油液 (Fluids):	Mineral-based fluids with viscosities of 7.4 to 420 cSt. (矿物油粘度)
插孔 (Cavity):	08-3, See page M-1
阀块材料 (Body Material):	Steel & Ductile iron rated to 350bar 钢和球铁允许使用最大压力350bar



压力 - 流量曲线 PRESSURE DROP VS.FLOW



订货代号 TO ORDER

LEP - 08 - 35 - * * - * *

┌───┐
┌───┐
┌───┐
┌───┐
┌───┐

└───┘
└───┘
└───┘
└───┘
└───┘

1
2
3
4
5

<p>1 功能 LEP= 外控逻辑阀 Cartridge-style Non-adjustable Logic Element With External Pilot</p>	<p>3 类型 35= 滑阀, 常闭, 外部导压源 Spool, Normally Closed, External Pilot Source</p>	<p>5 阀块油口 Body Porting 空白 Blank= 不带阀块 None 6T=SAE 6 8T=SAE 8 2G=G 1/4 3G=G 3/8</p>
<p>2 规格 Size 08=08 规格</p>	<p>4 差动压力 Differential Pressure 10=10psi(0.7bar) 40=40psi(2.8bar) 80=80psi(5.5bar) 110=110psi(7.6bar) 150=150psi(10.3bar)</p>	<p>※ 阀块详见章节 K-2 其它螺纹油口也是可选择的 Other Porting is Available</p>

安装尺寸 INSTALLATION DIMENSIONS

Unit=Millimeters

H

