

LCBIG/LCBIH

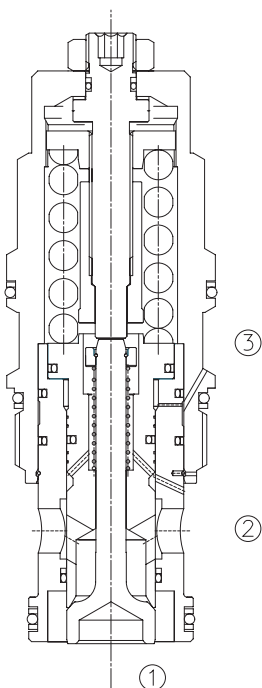
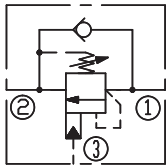
平衡阀

标准型 /standard

说明 DESCRIPTION

A cartridge-style standard capacity counterbalance valve
平衡阀

SYMBOL



工作 OPERATION

Counterbalance valves with pilot assist are meant for control on overrunning load. The check valve allows free flow from port ② to port ① while a direct-acting, pilot-assisted relief valve controls flow from port ① to port ② . Pilot assist at port ③ lowers the effective setting of the relief valve at a rate determined by the pilot ratio.

带先导开启平衡阀用于控制超越负载工况。油液从②口到①口单向自由流动；油液经直动，先导辅助从①口溢流到②口，③口是溢流辅助控制口，按控制比降低溢流功能的有效设定值。

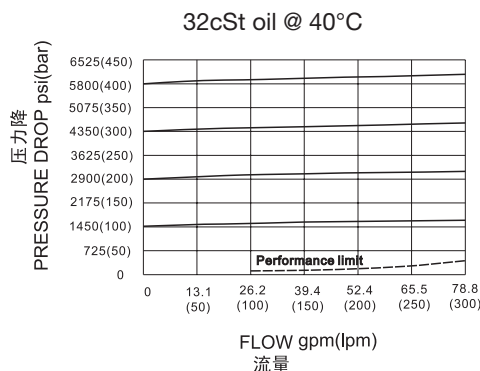
特性 FEATURES

- Counterbalance valves should be set at least 1.3 times the maximum load induced pressure.
最大设定压力至少为最大负载压力的 1.3 倍。
- Backpressure at port ② adds to the effective relief setting at a ratio of 1 plus the pilot ratio times the backpressure.
②口的背压按“控制比 +1”的倍数加到溢流阀的设定值上即增加值 = (1+ 控制比) × 压力值。
- Reseat exceeds 85% of set pressure when the valve is standard set. Setting lower than the standard set pressure may result in lower reseal percentages.
标准设定时，闭合压力值大于设定压力值的 85%；低于标准设定，则闭合压力值的百分比相应降低。
- Factory pressure setting established at 30cc/min(2 in³/min).
工厂的设定是指当溢流阀开启（流量为 30cc/min）时的压力。

技术参数 SPECIFICATIONS

最大设定值(Max. Setting):	350 bar
最大负载(Max. Recommended Load Pressure at Max. Setting):	270 bar
流量(Flow):	See PRESSURE DROP VS.FLOW graph.
内泄漏(Internal Leakage):	5 drops/min(滴/分).
控制比(Pilot Ratio):	(LCBIG)4.5:1; (LCBIH)10: 1
温度(Temperature):	-40°F to +250°F(-40°C to +120°C)
过滤(Filtration):	See page (参见) N-1
油液(Fluids):	Mineral-based fluids with viscosities of 7.4 to 420 cSt.(矿物油粘度)
插孔(Cavity):	SUN T-19A, See page M-9
阀块材料(Body Material):	6061-T6 aluminum alloy rated to 207bar, Steel & Ductile iron rated to 350bar 6061-T6铝,允许使用最大压力207bar 钢和球铁允许使用最大压力350bar

压力 - 流量曲线 PRESSURE DROP VS.FLOW



订货代号 TO ORDER

LCB * * - * * * - * *
 ┌───┐ ┌──┐ ┌──┐ ┌──┐ ┌──┐ ┌──┐ ┌──┐
 1 2 3 4 5 6 7

1 功能
 LCB= 平衡阀
 Counterbalance Cartridge Valve

2 流量 Flow
 I=480L/min

3 控制比 Pilot Ratio
 G=4.5:1
 H=10:1

4 控制方式 Control
 L=Standard Screw Adjustment

5 弹簧调压范围 Spring Ranges
 J=2000-5000psi(140-350bar)
 Preset:3000psi(210bar)(Check:1.7bar)
 K=1000-2500psi(70-175bar)
 Preset:2000psi(140bar)(Check:1.7bar)
 C=2000-5000psi(140-350bar)
 Preset:3000psi(210bar)(Check:0.3bar)
 D=1000-2500psi(70-175bar)
 Preset:2000psi(140bar)(Check:0.3bar)

6 油封 Seal Kits
 N= 丁晴橡胶 Buna N
 V= 氟橡胶 Viton

7 阀块油口 Body Porting
 空白 Blank= 不带阀块 None
 16T=SAE16
 20T=SAE20
 8G=G 1

※ 阀块详见章节 K-15
 其它螺纹油口也是可选择的
 Other Porting is Available

安装尺寸 INSTALLATION DIMENSIONS

Unit=Millimeters

