

LFD-10

分流 / 集流阀

说明 DESCRIPTION

A cartridge-style pressure-compensated flow divider/combiner valve

压力补偿型，插装式分流 / 集流阀

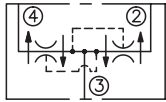
工作 OPERATION

In the dividing mode, the valve will divert input flow from port ③ to port ② and ④, based on the ratio specified, regardless of operating pressure.

The valve will combine input flow from ② and ④.

分流模式时，油液从③口按比例分流到②，④口，与工作压力无关。集流时，汇合②和④口油液。

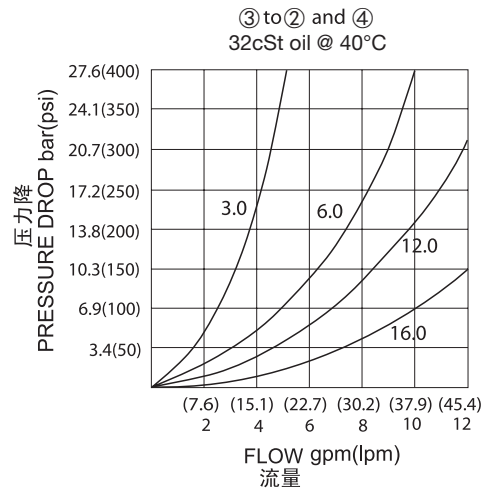
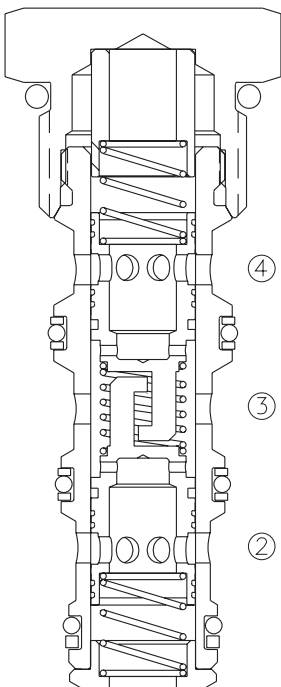
SYMBOL



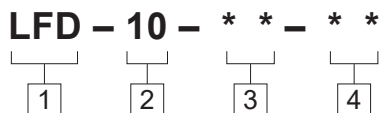
技术参数 SPECIFICATIONS

| | |
|------------------------------------|--|
| 工作压力(Operating Pressure): | 240 bar |
| 流量选项(Flow Options): | input flow:7.6lpm;ratio:50:50;model:LFD-10-2.0 input flow: 11.4 lpm; ratio:50:50; model:LFD-10-3.0 input flow: 22.7 lpm; ratio:50:50; model:LFD-10-6.0 input flow: 45.4 lpm; ratio:50:50; model:LFD-10-12.0 input flow: 60.6 lpm; ratio:50:50; model:LFD-10-16.0 |
| 流量控制精度(Flow Maintenance Accuracy): | 10% from 25 -100% of max. rated flow |
| 温度(Temperature): | -40°F to +250°F(-40°C to +120°C) |
| 过滤(Filtration): | See page (参见) N-1 |
| 油液(Fluids): | Mineral-based fluids with viscosities of 7.4 to 420 cSt.(矿物油粘度) |
| 插孔(Cavity): | 10-4, See page M-2 |
| 阀块材料(Body Material): | 6061-T6 aluminum alloy rated to 207bar, Steel & Ductile iron rated to 350bar 6061-T6铝,允许使用最大压力207bar 钢和球铁允许使用最大压力350bar |

压力 - 流量曲线 PRESSURE DROP VS.FLOW



订货代号 TO ORDER



| | | |
|---|--|---|
| <p>1 功能 LFD= 压力补偿型, 插装式分流 / 集流阀 Cartridge-style Pressure-compensated Flow Divider/Combiner Valve</p> | <p>3 流量选择 Flow Options 2.0=Input Flow:7.6lpm;Ratio:50:50; 3.0=Input Flow:11.4lpm;Ratio:50:50; 6.0=Input Flow:22.7lpm;Ratio:50:50; 12.0=Input Flow:45.4lpm;Ratio:50:50; 16.0=Input Flow:60.6lpm;Ratio:50:50;</p> | <p>4 阀块油口 Body Porting 空白 Blank= 不带阀块 None 6T=SAE6 8T=SAE8 2G=G 1/4 3G=G 3/8</p> |
|---|--|---|

※ 阀块详见章节 K-7
其它螺纹油口也是可选择的
Other Porting is Available



安装尺寸 INSTALLATION DIMENSIONS

Unit=Millimeters

