

LPBBB

先导式减压阀 (无溢流功能)

说明 DESCRIPTION

A cartridge-style pilot-operated spool-type pressure reducing valve

先导滑阀式减压阀

工作 OPERATION

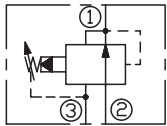
Pilot-operated, pressure reducing valves reduce a high primary pressure at the inlet (port ②) to a constant reduced pressure at port ① , allowing circuits with multiple pressure requirements to be operated using a single pump.

Pressure at port ③ is directly additive to the valve setting at a 1 :1 ratio and should not exceed 4500 psi (315 bar).Minimum setting is 75 psi (5 bar) for all spring ranges.

先导式减压阀将②口初始高压减到①口，①口可得到稳定不变的压力值，满足单泵回路提供多级工作压力要求。

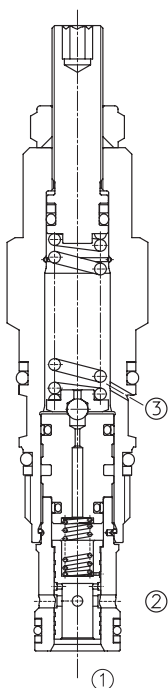
油口③的压力按 1:1 叠加到阀的设定值上，且油口 3 的压力不应超过 315 bar。所有弹簧最小设定是 5bar。

SYMBOL

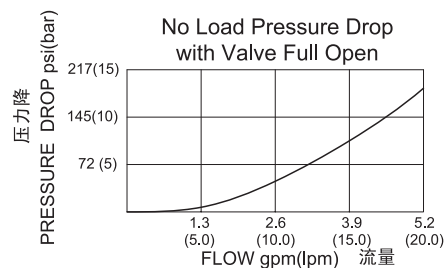
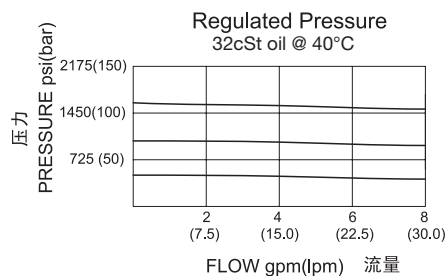


技术参数 SPECIFICATIONS

| | |
|---------------------------------|--|
| 最大工作压力(Max.Operating Pressure): | 350bar |
| 流量(Capacity): | See PRESSURE DROP VS. FLOW graph. |
| 弹簧调压范围(Standard Spring Ranges): | A: 5-210 bar, preset预设:14bar B: 5-105 bar, preset预设:14bar N: 5- 55 bar, preset预设:14bar Q: 5- 28 bar, preset预设:14bar W: 5-315 bar, preset预设:60bar |
| 温度(Temperature): | -40°F to +250°F(-40°C to +120°C) |
| 过滤(Filtration): | See page (参见) N-1 |
| 油液(Fluids): | Mineral-based fluids with viscosities of 7.4 to 420 cSt.(矿物油粘度) |
| 插孔(Cavity): | SUN T-163A, See page M-5 |
| 阀块材料(Body Material): | Steel & Ductile iron rated to 350bar 钢和球铁允许使用最大压力350bar |



压力 – 流量曲线 PRESSURE DROP VS.FLOW



订货代号 TO ORDER

LPB B B - * * * - * *

1
2
3
4
5
6

1 功能

LPB= 先导式减压阀
Pilot-operated Pressure
Reducing Valve

2 流量 Capacity

B=20L/min

3 控制方式 Control

L=Standard Screw Adjustment

4 弹簧调压范围 Spring Ranges

A=75-3000psi(5-210bar)

Preset:200psi(14bar)

B=75-1500psi(5-105bar)

Preset:200psi(14bar)

N=75-800psi(5-55bar)

Preset:200psi(14bar)

Q=75-400psi(5-28bar)

Preset:200psi(14bar)

W=75-4500psi(5-315bar)

Preset:870psi(60bar)

5 油封 Seal Kits

N= 丁晴橡胶 Buna N

V= 氟橡胶 Viton

6 阀块油口 Body Porting

空白 Blank= 不带阀块 None

8T=SAE8

※ 阀块详见章节 K-16

其它螺纹油口也是可选择的

Other Porting is Available

E

安装尺寸 INSTALLATION DIMENSIONS

Unit=Millimeters

