

LPBDB

先导式减压阀 (无溢流功能)

说明 DESCRIPTION

A cartridge-style pilot-operated pressure reducing valve
先导式减压阀

工作 OPERATION

Pilot-operated, pressure reducing valves reduce a high primary pressure at the inlet (port ②) to a constant reduced pressure at port ①, allowing circuits with multiple pressure requirements to be operated using a single pump.

先导式减压阀将②口初始高压减到①口，①口可得到稳定不变的压力值，满足单泵回路提供多级工作压力要求。

Recommended maximum inlet pressure is determined by the adjustment range.

Ranges D, E, N, and Q are tested with a 2000 psi (140 bar) maximum differential between inlet and reduced pressure.

Ranges A and B and are tested with a 3000 psi (210 bar) maximum differential between inlet and reduced pressure.

Ranges C and W are tested with 5000 psi (350 bar) of inlet pressure.

此阀推荐的②口最大压力是由减压阀的弹簧调节范围而定的。

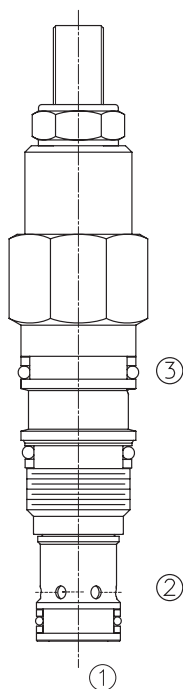
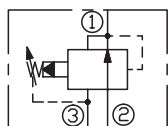
弹簧调节范围: D, E, N 和 Q, ②口和①口的最大允许压差为 140bar;

弹簧调节范围: A 和 B, ②口和①口的最大允许压差为 210bar;

弹簧调节范围: C 和 W, 是由进油口最大压力 350Bar 来测试的;

例: 弹簧调节范围 D(1.7-55 bar), 最大允许压差为 140bar, 若①口设定为 50 bar, 则②口最大允许压力为 :190bar.

SYMBOL



技术参数 SPECIFICATIONS

最大工作压力(Max.Operating Pressure): 350bar

流量(Capacity): See PRESSURE DROP VS. FLOW graph.

弹簧调压范围(Standard Spring Ranges):
 A: 7-210 bar, preset 预设:14bar
 B: 3.5-105 bar, preset 预设:14bar
 N: 4- 55 bar, preset 预设:14bar
 Q: 4- 28 bar, preset 预设:14bar
 W:10.5-315 bar, preset 预设:14bar

附加选项(Additional Options):
 C:10.5-420 bar, preset 预设:14bar
 D: 1.7- 55 bar, preset 预设:14bar
 E: 1.7- 28 bar, preset 预设:14bar
 G: 4-210 bar, preset 预设:14bar
 K: 5-105 bar, preset 预设:14bar
 P: 2.8- 28 bar , preset 预设:14bar

温度(Temperature): -40°F to +250°F(-40°C to +120°C)

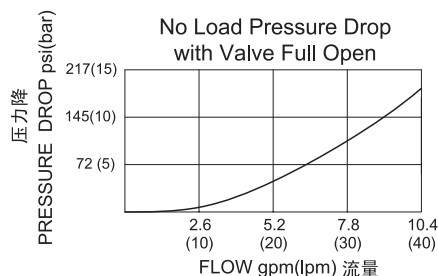
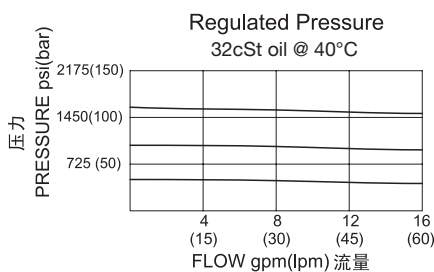
过滤(Filtration): See page (参见) N-1

油液(Fluids): Mineral-based fluids with viscosities of 7.4 to 420 cSt.(矿物油粘度)

插孔(Cavity): SUN T-11A, See page M-6

阀块材料(Body Material):
Steel & Ductile iron rated to 350bar 钢和球铁允许使用最大压力350bar

压力 - 流量曲线 PRESSURE DROP VS.FLOW



订货代号 TO ORDER

LPB D B - * * * - * *

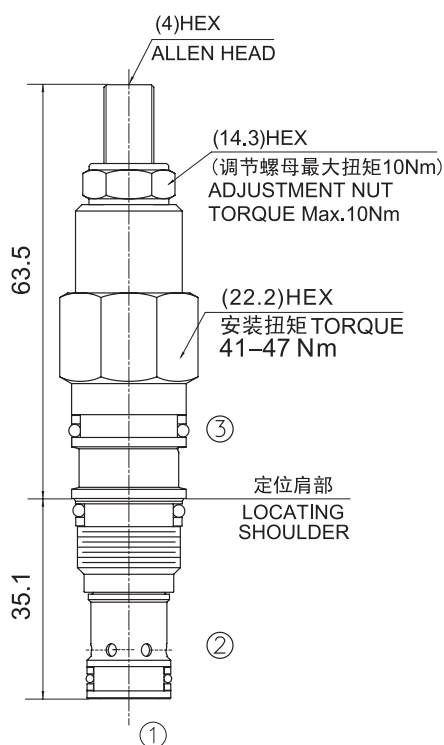
1
2
3
4
5
6

<p>1 功能 LPB= 先导式减压阀 Cartridge-style Pilot-operated Spool-type Pressure Reducing Valve</p>	<p>4 弹簧调压 Spring Ranges A=100-3000psi(7-210bar) Preset:200psi(14bar) B=50-1500psi(3.5-105bar) Preset:200psi(14bar) N=60-800psi(4-55bar) Preset:200psi(14bar) Q=60-400psi(4-28bar) Preset:200psi(14bar) W=150-4500psi(10.5-315bar) Preset:200bar(14bar)</p>	<p>5 油封 SEAL KITS N=Buna N V=Viton</p> <hr/> <p>6 阀块油口 BODY PORTING 空白 Blank= 不带阀块 None 6T=SAE6 8T=SAE8 3G=G 3/8 4G=G 1/2</p>
--	---	--

※ 阀块详见章节 K-17—K-22
 其它螺纹油口也是可选择的
 Other Porting is Available

安装尺寸 INSTALLATION DIMENSIONS

Unit=Millimeters



附加选项 Additional Options:

- C=150-6000psi(10.5-420bar)
Preset:200psi(14bar)
- D=25-800psi(1.7-55bar)
Preset:200psi(14bar)
- E=25-400psi(1.7-28bar)
Preset:200psi(14bar)
- G=60-3000psi(4-210bar)
Preset:200psi(14bar)
- K=75-1500psi(5-105bar)
Preset:200psi(14bar)
- P=40-400psi(2.8-28bar)
Preset:200bar(14bar)