

LLOHD-XDN

逻辑阀

说明 DESCRIPTION

A cartridge-style, vent-to-open, spring biased closed, unbalanced poppet logic element with pilot source from port ① or port ②

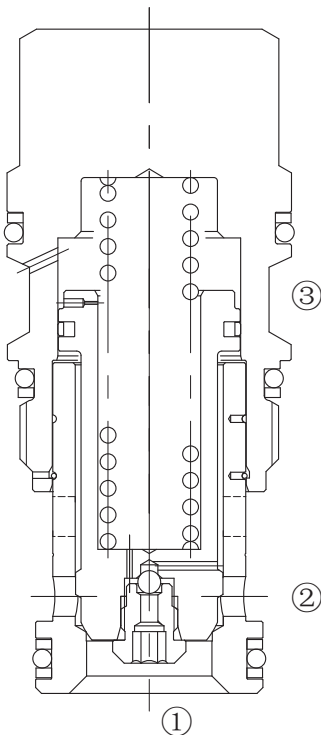
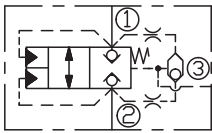
外接口开启，弹簧偏置关闭，非平衡锥阀逻辑单元带①口或②口导压

工作 OPERATION

These unbalanced, vent-to-open logic valves are 2-way switching elements that are spring-biased closed and incorporate an integral shuttle so that the higher of pressures at either port ① or port ② can be used as a pilot source. With port ③ blocked, the valve is held in the closed position by the spring force. With port ③ vented, the valve will open provided there is sufficient pressure to overcome the spring force. The force generated at port ③, plus the spring force, must be greater than the sum of the forces acting at port ① and port ② for the valve to remain closed. NOTE: The pilot area (port ③) is 1.8 times the area at port ① and 2.25 times the area at port ②.

此类阀为非平衡，外控开启，二通逻辑开关单元。此类阀在弹簧偏置下处于关闭状态且集成一个梭阀，从而可将①口或②口中较高的压力作为先导源。当堵住③口，逻辑单元会在弹簧力作用下保持关闭状态。当③口导通到油箱，只要有足够的压力克服弹簧力，逻辑阀将开启。③口产生的作用力加上弹簧力必须比①口和②口产生的作用力之和，阀才能保持关闭状态。注意：先导面积（③口）是①口作用面积的1.8倍且为②口作用面积的2.25倍。

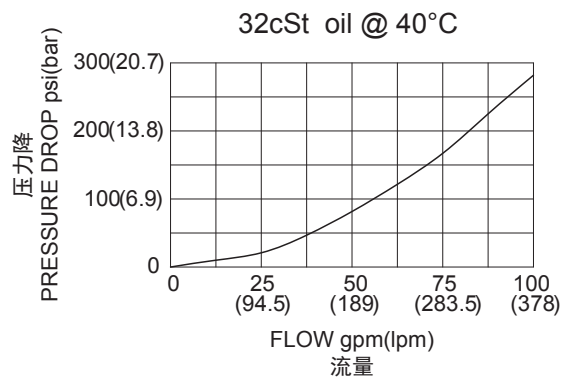
SYMBOL



技术参数 SPECIFICATIONS

最大工作压力 (Max. Operating Pressure):	350bar
流量 (Flow) :	See PRESSURE DROP VS.FLOW graph.
内泄漏 (Internal Leakage):	10 drops/min. (10滴/分) max.
温度 (Temperature):	-40°F to +250°F(-40°C to +120°C)
过滤 (Filtration):	See Page (参见) N-1
油液 (Fluids):	Mineral-based fluids with viscosities of 7.4 to 420 cSt. (矿物油粘度)
插孔 (Cavity):	SUN T-17A, See page M-7
阀块材料 (Body Material):	Steel & Ductile iron rated to 350bar 钢和球铁允许使用最大压力350bar

压力 - 流量曲线 PRESSURE DROP VS.FLOW



订货代号 TO ORDER

LLO H D - X * * - * *

1
2
3
4
5
6
7

1 功能
LLO= 非平衡锥阀逻辑单元
Unbalanced Poppet Logic Element

2 流量 Capacity
H=380L/min

3 导压口
D= ①口或②口导压源

4 控制方式 Control
X= 不可调 Not Adjustable

5 开启压力 Cracking Pressure
D=50psi(3.5bar)

6 油封 Seal
N= 丁晴橡胶 Buna N
V= 氟橡胶 Viton

7 阀块油口 Body Porting
空白 Blank= 不带阀块 None
12T=SAE 12
16T=SAE 16
6G=G 3/4
8G=G 1

※ 阀块详见章节 K-25—K-26
其它螺纹油口也是可选择的
Other Porting is Available

安装尺寸 INSTALLATION DIMENSIONS

Unit=Millimeters

H

