

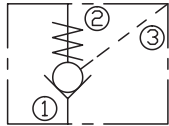
LPC2-10

液控单向阀 (液控关闭)

说明 DESCRIPTION

A cartridge-style pilot-to-close poppet-type check valve
 锥阀式液控关闭单向阀

SYMBOL



工作 OPERATION

Pressure at ① overcomes the spring-bias poppet and allows free flow to ② . Flow in the opposite direction, from ② to ① ,is blocked by the poppet.

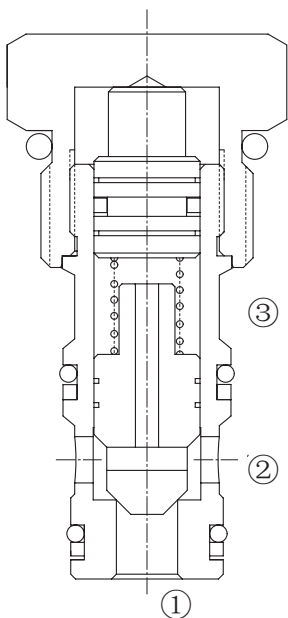
When the required pilot pressure is achieved at ③ ,the poppet is held closed to block flow between ① and ② .The pilot piston area to poppet seat area ratio is 3 to 1.

当在①口的压力超过开启压力，①到②开启；在反方向，②到①关闭；

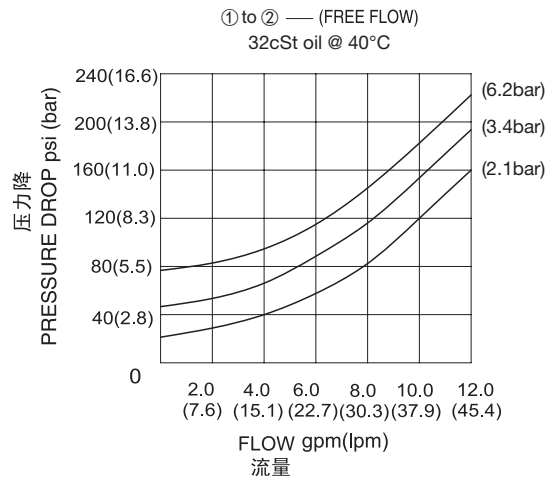
当液控口③压力达到一定时，锥阀芯关闭，①和②不通，液控活塞面积与锥阀座面积比为3:1。

技术参数 SPECIFICATIONS

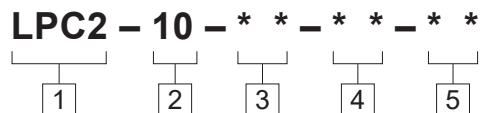
工作压力(Operating Pressure):	250bar
流量(Flow):	See PRESSURE DROP VS.FLOW graph.
内泄漏(Internal Leakage):	2 drops/min(滴/分). max. at 250bar
开启压力(Crack Pressures):	2.1=2.1bar 3.4=3.4bar 6.2=6.2bar
控制比(Pilot Ratio):	3:1
温度(Temperature):	-40°F to +250°F(-40°C to +120°C)
过滤(Filtration):	See page (参见) N-1
油液(Fluids):	Mineral-based fluids with viscosities of 7.4 to 420 cSt.(矿物油粘度)
插孔(Cavity):	10-3,See page M-2
阀块材料(Body Material):	6061-T6 aluminum alloy rated to 207bar, Steel & Ductile iron rated to 350bar 6061-T6铝,允许使用最大压力207bar 钢和球铁允许使用最大压力350bar



压力 - 流量曲线 PRESSURE DROP VS.FLOW



订货代号 TO ORDER



1 功能
LPC2= 液控单向阀
Pilot to Close Check Valve

2 规格 Size
10=10 规格

3 油封 Seal Kits
N= 丁晴橡胶 (标准型) Buna N(Std)
NS= 丁晴橡胶 (活塞上带密封圈)
最低开启压力为 6.2bar
Buna N with sealed piston
6.2bar(90psi)minimun spring
V= 氟橡胶 V-Fluorocarbon
VS= 氟橡胶 (活塞上带密封圈)
最低开启压力为 6.2bar
VS-Fluorocarbon with sealed piston
6.2bar(90psi)minimun spring

4 开启压力 Cracking Pressure
2.1=2.1bar
3.4=3.4bar
6.2=6.2bar

5 阀块油口 Body Porting
空白 Blank= 不带阀块 None
6T=SAE6
8T=SAE8
2G=G 1/4
3G=G 3/8

※ 阀块详见章节 K-5
其它螺纹油口也是可选择的
Other Porting is Available

安装尺寸 INSTALLATION DIMENSIONS

Unit=Millimeters

