

LPCI-08M

液控单向阀

说明 DESCRIPTION

A cartridge-style pilot-to-open poppet-type check valve
锥阀式液控单向阀

工作 OPERATION

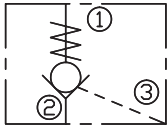
The valve allows flow from ② to ①, while normally blocking flow from ① to ②. Flow will be allowed from ① to ② when sufficient pressure is applied at ③.

The cartridge has a 4:1 pilot ratio, meaning that at least one-fourth of the load pressure held at ① is required at ③ to open the valve.

当在②口的压力超过开启压力，②到①开启；在反方向，①到②关闭；

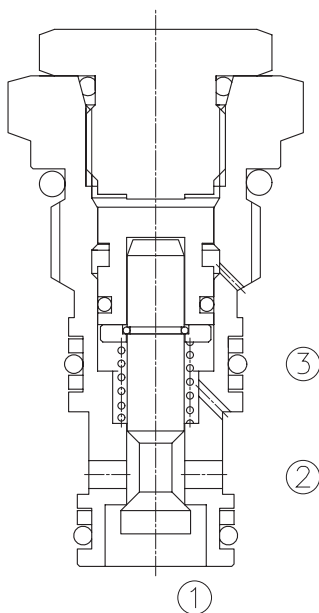
当在③口所需的液压力达到①口负载的 1/4 时，阀芯打开，①和②通，液控比为 4:1。

SYMBOL

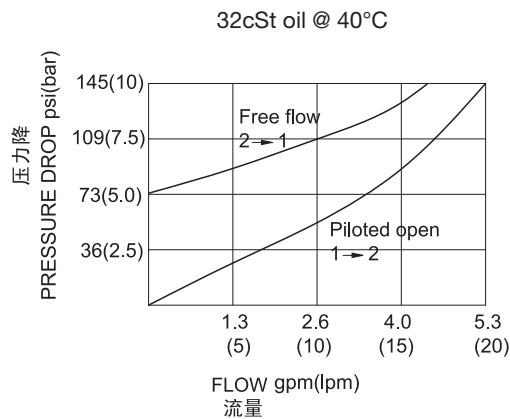


技术参数 SPECIFICATIONS

工作压力(Operating Pressure):	350bar
流量(Flow):	See PRESSURE DROP VS.FLOW graph.
内泄漏(Internal Leakage):	2 drops/min(滴/分). max. at 350bar
开启压力(Crack Pressures):	5.0=5.0bar
控制比(Pilot Ratio):	4:1
温度(Temperature):	-40°F to +250°F(-40°C to +120°C)
过滤(Filtration):	See page (参见) N-1
油液(Fluids):	Mineral-based fluids with viscosities of 7.4 to 420 cSt.(矿物油粘度)
插孔(Cavity):	08M-3,See page M-17
阀块材料(Body Material):	Steel & Ductile iron rated to 350bar 钢和球铁允许使用最大压力350bar



压力 - 流量曲线 PRESSURE DROP VS.FLOW



订货代号 TO ORDER

LPCI - 08M - * * - * *

┌───┐
┌───┐
┌───┐
┌───┐
1
2
3
4

- | | | |
|--|--|--|
| <p>1 功能
LPCI= 液控单向阀
Pilot to Open Check Valve</p> | <p>3 开启压力 Cracking Pressure
5.0=5.0bar</p> | <p>4 阀块油口 Body Porting
空白 Blank= 不带阀块 None
4T=SAE4
6T=SAE6</p> |
| <p>2 规格 Size
08M=08M 规格</p> | <p>其它螺纹油口也是可选择的
Other Porting is Available</p> | |

D

安装尺寸 INSTALLATION DIMENSIONS

Unit=Millimeters

