

# LPD2C-10-4

二位三通液控换向阀（过渡机能全封闭）  
透大气

## 说明 DESCRIPTION

A cartridge-style, 2-position, 3-way, pilot-operated, spool-type, Atmospheric Vent directional valve  
二位，三通，液控，透大气型，  
螺纹插装换向阀

## 工作 OPERATION

In neutral position (unpiloted), the valve allows flow from port ③ to ② bidirectionally, while port ④ is blocked. The spring chamber is vented to atmosphere, which is internally O-ring sealed from the cartridge flow paths.

On remote pilot signal at port ①, the valve's spool shifts to open port ③ to ④, while port ② is blocked.

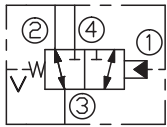
Because of the vented spring chamber, the cartridge may be fully pressurized at any port without affecting required pilot pressure.

在初始位置（无液控）时，此阀允许油液从③到②双向流动，④口不通。此阀弹簧腔通大气，阀内弹簧腔与内部油路用O形圈密封。

当远端信号到达①口时，阀芯移动，③到④双向流通，②口不通。

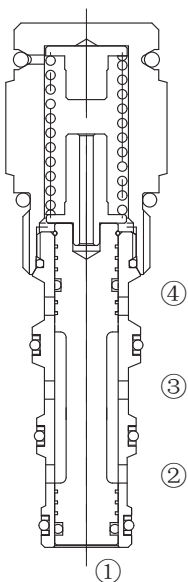
由于此阀弹簧腔通大气，所有油口匀可以加载全压力，而不影响所需的液控压力。

## SYMBOL

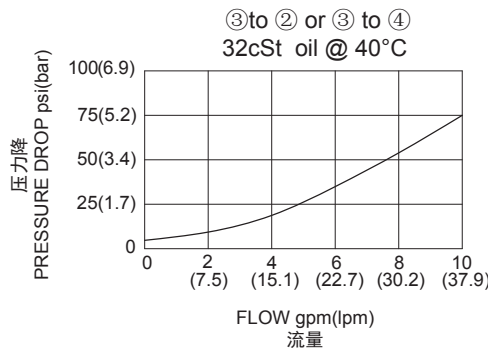


## 技术参数 SPECIFICATIONS

最大工作压力 (Max. Operating Pressure):	250bar
流量 (Flow) :	See PRESSURE DROP VS.FLOW graph.
内泄漏 (Internal Leakage):	82cc/min. (毫升/分) max. at 250bar
先导口压力要求 (Pilot Pressure Required):	阀芯完全换向 (To Full Spool Shift): 采用4.1bar弹簧 (for 4.1bar spring) : 4.7bar 采用7.6bar弹簧 (for 7.6bar spring) : 8.6bar
温度 (Temperature):	-40°F to +250°F (-40°C to +120°C)
过滤 (Filtration):	See Page (参见) N-1
油液 (Fluids):	Mineral-based fluids with viscosities of 7.4 to 420 cSt. (矿物油粘度)
插孔 (Cavity):	10-4, See page M-2
阀块材料 (Body Material):	6061-T6 aluminum alloy rated to 207bar, Steel & Ductile iron rated to 350bar 6061-T6铝，允许使用最大压力207bar 钢和球铁允许使用最大压力350bar



## 压力 - 流量曲线 PRESSURE DROP VS.FLOW



## 订货代号 TO ORDER

**LPD2C - 10 - 4 - \* \* - \* \* - \* \***  

1
2
3
4
5

**1 功能**  
 LPD2C= 二位三通液控换向阀  
 Piloted Three-way Spool Directional Valve

**2 规格 Size**  
 10-4=10-4 规格

**3 弹簧调压 Bias Spring**  
 4=40psi(2.8bar)  
 6=60psi(4.1bar)  
 8=80psi(5.5bar)  
 11=110psi(7.6bar)

**4 油封 Seal Kits**  
 N= 丁腈橡胶 (标准型) Buna N(Std)  
 NS= 丁腈橡胶 (活塞上带密封圈)  
 最低弹簧压力为 7.6bar  
 Buna N with sealed piston  
 110psi(7.6bar)minumun spring  
 V= 氟橡胶 V-Fluorocarbon  
 VS= 氟橡胶 (活塞上带密封圈)  
 最低弹簧压力为 7.6bar  
 Fluorocarbon with sealed piston  
 110psi(7.6bar)minumun spring

**5 阀块油口 Body Porting**  
 空白 Blank= 不带阀块 None  
 6T=SAE6  
 8T=SAE8  
 2G=G 1/4  
 3G=G 3/8

※ 阀块详见章节 K-6  
 其它螺纹油口也是可选择的  
 Other Porting is Available

D

## 安装尺寸 INSTALLATION DIMENSIONS

Unit=Millimeters

