

# LPD-10-4

## 二位三通液控换向阀

### 说明 DESCRIPTION

A cartridge-style 3-way pilot-operated spool-type internal-vent directional valve

二位，三通，外控内排，螺纹插装方向阀

### 工作 OPERATION

On no remote pilot signal at ①, the valve allows flow from ③ to ④, while flow is blocked at ②.

On remote pilot signal at ①, the valve shifts to open from ③ to ②, while blocking flow at ④.

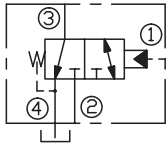
Since ④ is common to the spring chamber, pressure on ④ will directly (1:1) affect the pilot pressure required, and must always be added to the bias spring value.

当①口没有先导压力信号时，③到④通，②不通；

当①口有先导压力信号时，阀芯换向，③到②通，④不通；

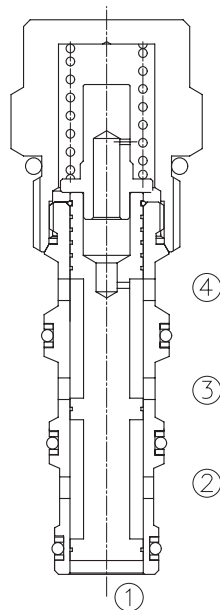
由于④口与弹簧腔通，所以④口的压力将直接 1 : 1 地影响先导压力要求。

### SYMBOL

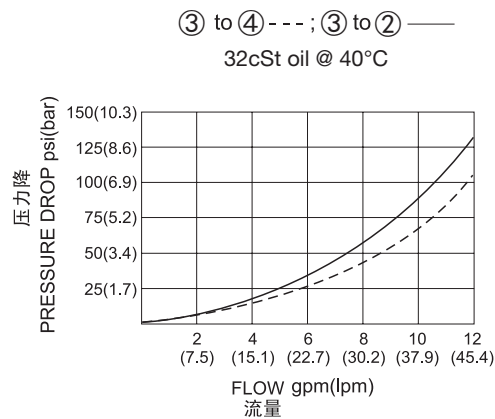


### 技术参数 SPECIFICATIONS

工作压力(Operating pressure):	250bar
流量(Flow):	See PRESSURE DROP VS.FLOW graph.
内泄漏(Internal Leakage):	82 cc/min. max. at 250 bar
先导口压力要求(Pilot Pressure Required):	To Spool Crossover -4.1 bar (60psi) Spring:4.7 bar(68.2psi) -7.6 bar(110psi) Spring: 7.6 bar(110psi) To Full Spool Shift -4.1 bar (60psi) Spring: 5.2 bar (75psi) -7.6 bar(110psi) Spring: 8.6 bar(125psi)
温度(Temperature):	-40°F to +250°F(-40°C to +120°C)
过滤(Filtration):	See page (参见) N-1
油液(Fluids):	Mineral-based fluids with viscosities of 7.4 to 420 cSt.(矿物油粘度)
插孔(Cavity):	10-4, See page M-2
阀块材料(Body Material):	6061-T6 aluminum alloy rated to 207bar, Steel & Ductile iron rated to 350bar 6061-T6铝,允许使用最大压力207bar 钢和球铁允许使用最大压力350bar



### 压力 - 流量曲线 PRESSURE DROP VS.FLOW



## 订货代号 TO ORDER

**LPD - 10 - 4 - \* \* - \* \***

┌───┐
┌───┐
┌───┐
┌───┐  
1
2
3
4

**1 功能**

LPD= 二位三通液控换向阀  
Piloted Three-way Spool Directional Valve

**2 规格 Size**

10-4=10-4 规格

**3 弹簧调压 Bias spring**

6=60psi(4.1bar)  
11=110psi(7.6bar)  
17=170psi(11.7bar)  
20=203psi(14bar)

**4 阀块油口 Body Porting**

空白 Blank= 不带阀块 None  
6T=SAE6  
8T=SAE8  
2G=G 1/4  
3G=G 3/8

※ 阀块详见章节 K-6  
其它螺纹油口也是可选择的  
Other Porting is Available

D

## 安装尺寸 INSTALLATION DIMENSIONS

Unit=Millimeters

