

# LPFR-10-3F

流量控制阀，压力补偿型（固定节流孔）

## 说明 DESCRIPTION

A cartridge-style non-adjustable pressure-compensated flow control valve

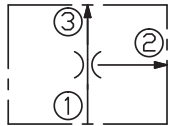
压力补偿型，插装式流量阀

## 工作 OPERATION

The valve maintains a constant flow rate from ③ regardless of load pressure changes in the system downstream of ③, or in the bypass leg at ②. The valve will pressure compensate once a minimum pressure drop (determined by the fixed spring setting) is achieved from ① to ③. Bypass port ② may be fully pressurized. Flow out of priority port ③ may vary based on input flow amount, particularly with lower temperatures and increased fluid viscosities.

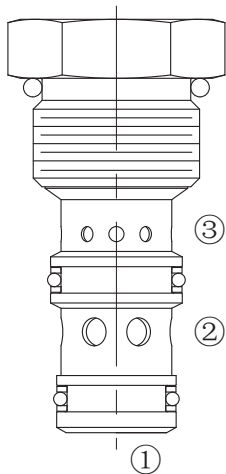
不管③口负载压力或旁路②口负载压力如何变化，从③口流出的流量维持不变；油液从①口到③口的压降一旦达到最小值（弹簧固定值），阀芯将开始压力补偿。旁路②口可作为工作口。基于进油量的不同，特别在低温和油液粘度增加条件下，从优先油口③流出的油液可能有差别。

## SYMBOL



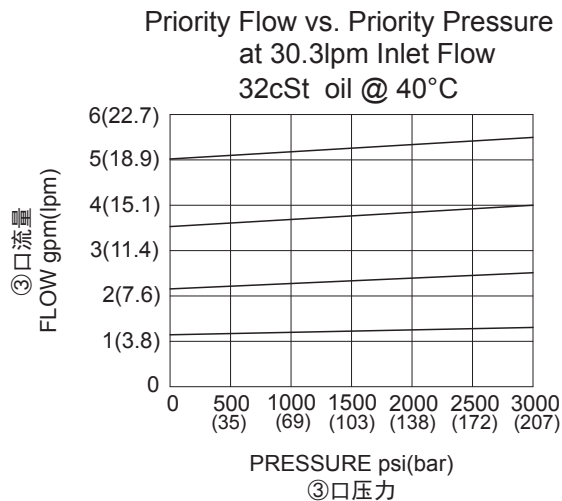
## 技术参数 SPECIFICATIONS

最大工作压力 (Max. Operating Pressure):	207bar
最大输入流量 (MAX. Input Flow Rate) :	38lpm.
流量设定 (Flow Setting):	1 - 19lpm
温度 (Temperature):	-40°F to +250°F(-40°C to +120°C)
过滤 (Filtration):	See Page (参见) N-1
油液 (Fluids):	Mineral-based fluids with viscosities of 7.4 to 420 cSt. (矿物油粘度)
插孔 (Cavity):	10-3, See page M-2
阀块材料 (Body Material):	6061-T6 aluminum alloy rated to 207bar, Steel & Ductile iron rated to 350bar 6061-T6铝，允许使用最大压力207bar 钢和球铁允许使用最大压力350bar



③口油液切断，  
则②口也无油液

## 压力 - 流量曲线 PRESSURE DROP VS.FLOW



## 订货代号 TO ORDER

**LPFR - 10 - 3 F - \* \* - \* \***  

1
2
3
4
5

**1** 功能

LPFR= 压力补偿型, 不可调, 插装式流量阀  
 Non-adjustable Pressure-compensated  
 Flow Control Valve

**2** 规格 Size

10-3=10-3 规格

**3** 调节 Adjustment

F= 不可调 Fixed

**4** 流量设定 Flow Setting

M2.8= 2.8lpm

**5** 阀块油口 Body Porting

空白 Blank= 不带阀块 None

6T=SAE6

8T=SAE8

2G=G 1/4

3G=G 3/8

※ 阀块详见章节 K-5

其它螺纹油口也是可选择的

Other Porting is Available

F

## 安装尺寸 INSTALLATION DIMENSIONS

Unit=Millimeters

