

# LPOPRV2-10

## 先导式溢流阀 [锥阀型]

### 说明 DESCRIPTION

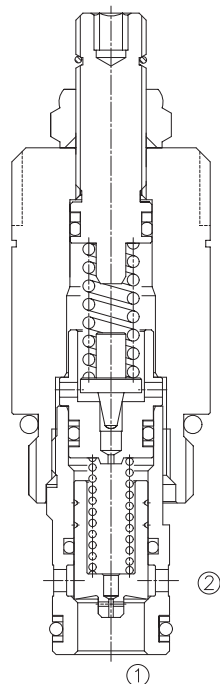
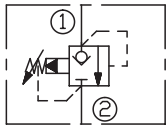
A cartridge-style pilot-operated poppet-type relief valve  
先导座阀式溢流阀

### 工作 OPERATION

The valve prevents flow from ① to ② until pressure at ① exceeds the set crack pressure and opens the pilot section. The pilot flow creates a pressure differential across the poppet which causes the valve to open allowing flow from ① to ② protecting the circuit from over pressurization.

阀体①口和②口不通，直到①口压力超过设定压力且打开先导阀芯。这样，先导阀芯引起主阀芯两端压力差的变化，压力差达到一定时，①口和②口互通。

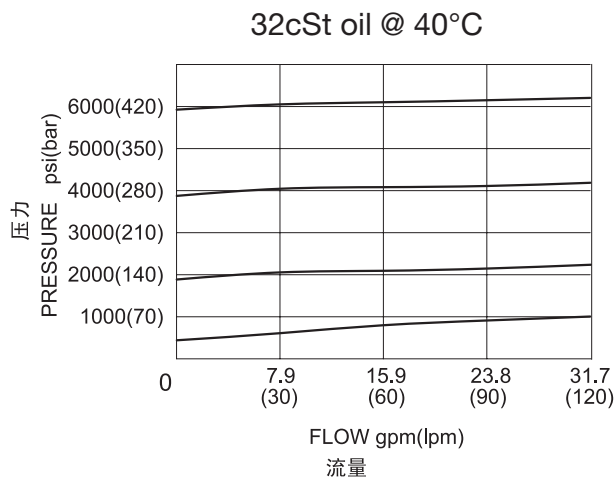
### SYMBOL



### 技术参数 SPECIFICATIONS

最大工作压力(Max.Operating Pressure):	Port①: 420bar
最大允许压力(Max.Pressure Admitted):	Port②: 210bar
流量(Flow):	See PRESSURE DROP VS. FLOW graph.
内泄漏(Internal Leakage):	5 drops/min(滴/分). max. to 80% of nominal setting
闭合压力(Reseat Pressure):	85% of crack pressure 开启压力 (crack pressure at 0.95 lpm /0.25 gpm)
弹簧调压范围(Standard Spring Ranges):	0.5 to 55 bar; preset 预设定: 47 bar 35 to 140 bar; preset 预设定: 48 bar 70 to 280 bar; preset 预设定: 88 bar 140 to 420 bar; preset 预设定: 140 bar
温度(Temperature):	-40°F to +250°F(-40°C to +120°C)
过滤(Filtration):	See page (参见) N-1
油液(Fluids):	Mineral-based fluids with viscosities of 7.4 to 420 cSt.(矿物油粘度)
插孔(Cavity):	10-2, See page M-2
阀块材料(Body Material):	Steel & Ductile iron rated to 350bar 钢和球铁允许使用最大压力350bar

### 压力 – 流量曲线 PRESSURE DROP VS.FLOW



订货代号 TO ORDER

**LPOPRV2 - 10 - \* \* - \* / \* \* \* \* - \* \***  

└──┬──┘
└──┬──┘
└──┬──┘
└──┬──┘
└──┬──┘
└──┬──┘
  

1
2
3
4
5
6

- |  |  |   |
|--|--|---|
| <p><b>1 功能</b><br/>LPOPRV2= 先导式溢流阀<br/>Pilot-Operated Poppet-type<br/>Relief Valve</p> | <p><b>3 弹簧调压范围 Spring Ranges</b><br/>8=100-800psi(7-55bar)<br/>Preset:680psi(47bar)<br/>20=500-2000psi(35-140bar)<br/>Preset:696psi(48bar)<br/>40=1000-4000psi(70-280bar)<br/>Preset:1275psi(88bar)<br/>60=2000-6000psi(140-420bar)<br/>Preset:2000psi(140bar)</p> | <p><b>5 设定压力 Setting In Bar</b><br/>空白 Blank= 预设定 Preset<br/>例 Example:0250=250bar</p>  |
| <p><b>2 规格 Size</b><br/>10=10 规格</p>   | <p><b>4 油封 Seal Kits</b><br/>空白 Blank=O 型圈密封 (for O-ring Seals)</p>  | <p><b>6 阀块油口 Body Porting</b><br/>空白 Blank= 不带阀块 None<br/>6T=SAE6<br/>8T=SAE8<br/>3G=G 3/8<br/>4G=G 1/2</p> <p>※ 阀块详见章节 K-4<br/>其它螺纹油口也是可选择的<br/>Other Porting is Available</p> |

安装尺寸 INSTALLATION DIMENSIONS

Unit=Millimeters

