

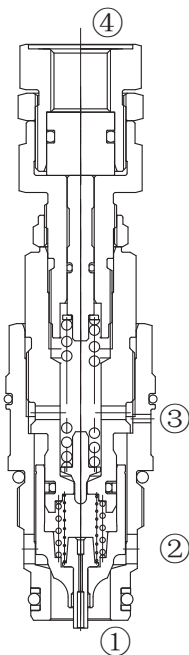
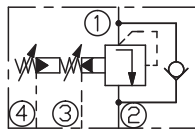
LPOSRV2KPHK-M28

二级先导溢流阀 (带反向单向阀功能)

说明 DESCRIPTION

A pilot-operated, pressure limitation and feed valve with external drain port and hydraulic pressure sequencing stage
带反向单向阀, 带二级增压功能, 外泄口型先导座阀式溢流阀

SYMBOL



工作 OPERATION

The valve prevents flow from ① to ② until pressure at ① exceeds the set crack pressure and opens the pilot section. The pilot flow creates a pressure differential across the poppet which causes the valve to open allowing flow from ① to ② protecting the circuit from over pressurization.

If the pressure at ② is at least 2 bar higher than Pressure at ①. The main poppet will be lifted out of its seat, to allow flow from ② to ①, this feed function is used to make up for lacking hydraulic fluid volumes.

Pressure at port ③ is directly additive to the valve setting at a 1:1 ratio and should not exceed 50bar.

By connecting pilot oil pressure to the external port ④, the control piston is pressurized. This increases the preload of the main spring and the maximum set system pressure.

阀体①口和②口不通, 直到①口压力超过设定压力且打开先导阀芯。这样, 先导阀芯引起主阀芯两端压力差的变化, 压力差达到一定时, ①口和②口互通。当②口的压力比①口压力高出 2.0bar 以上时, ②到①打开, 油液从②流向①, 补油功能通常在系统液压不足时进行补充。

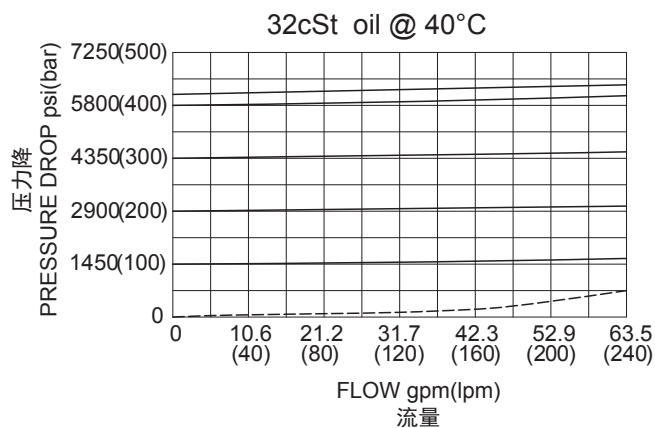
油口③的压力直接 1:1 叠加到溢流阀设定值上, 并且不能超过 50bar。

当④口外接控制油液, 控制活塞受到压力, 从而增加调压弹簧的预压力和系统的最大设定压力。

技术参数 SPECIFICATIONS

最大工作压力 (Max. Operating Pressure):	420bar
流量 (Flow) :	200 L/min
内泄漏 (Internal Leakage):	10 drops/min. (10滴/分) max. to 80% of nominal setting
温度 (Temperature):	-40°F to +250°F(-40°C to +120°C)
过滤 (Filtration):	See Page (参见) N-1
油液 (Fluids):	Mineral-based fluids with viscosities of 7.4 to 420 cSt. (矿物油粘度)
插孔 (Cavity):	Rexroth-HC, See page M-27
阀块材料 (Body Material):	Steel & Ductile iron rated to 350bar 钢和球铁允许使用最大压力350bar

压力 - 流量曲线 PRESSURE DROP VS.FLOW



订货代号 TO ORDER

LPOSRV2 K PHK - M28 - ** / ** / **** - ****



<p>1 功能 LPOSRV2= 先导式溢流阀 Adjustable Pilot-Operated Cartridge Relief Valve</p>	<p>5 压力范围 Spring Ranges 60=1450-6090psi(100-420bar) Preset:1885psi(130bar)</p>	<p>8 阀块油口 Body Porting 空白 Blank= 不带阀块 None 10T=SAE10 6G=G 3/4</p>
<p>2 外泄口 External Drain Port</p>	<p>6 一级设定压力 Settings In Bar 空白 Blank= 预设定 Preset:1885psi(130bar) 例 Example:0200=200bar</p>	<p>其它螺纹油口也是可选择的 Other Porting is Available</p>
<p>3 调节类型 Adjustment Type PHK= 二级增压 Adjustable Via Pressure Sequencing Stage</p>	<p>7 二级设定压力 Settings In Bar 空白 Blank= 预设定 Preset:3770psi(260bar) 例 Example:0280=280bar</p>	
<p>4 规格 Size M28=M28 规格</p>		

安装尺寸 INSTALLATION DIMENSIONS

Unit=Millimeters

