

LPPR-10

先导式减压 / 溢流阀

说明 DESCRIPTION

A cartridge-style pilot-operated pressure reducing/relieving valve
先导式减压 / 溢流阀

工作 OPERATION

In its steady state, the valve allows flow to pass bi-directionally from ② to ①, with the spring chamber constantly drained at ③. On attainment of a pre-determined pressure at ①, the cartridge shifts to restrict input flow at ②, thereby regulating pressure at ①. In this mode, the valve will also relieve ① to ③.

Dead band (from reducing to relieving) pressure rise over reduced pressure setting:

Non-flow condition: approximately 0.55 bar (8 psi); with flow: approximately 2.1 bar (30 psi).

在①口的压力达到弹簧设定的压力时，从②到①减压。弹簧腔内排到③口。

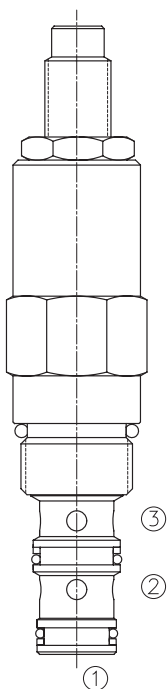
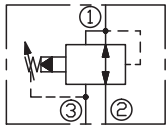
当①口的压力超过预设定的压力时，②口渐渐关闭，①到③开始溢流。

由减压转至溢流超设定压力的死区：无流动状态约 0.55bar，流动状态约 2.1bar。

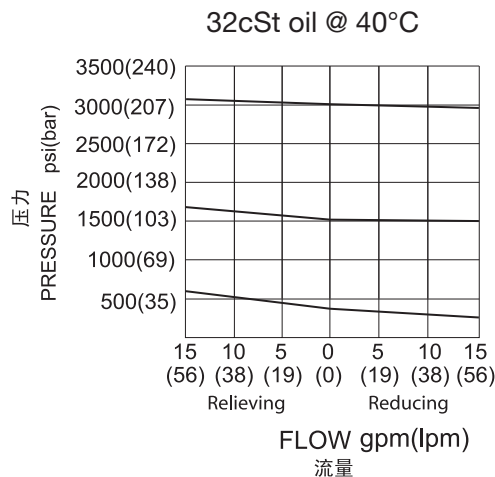
技术参数 SPECIFICATIONS

工作压力(Operating Pressure):	207bar
流量(Flow):	See performance chart
弹簧调压范围(Standard Spring Ranges):	6.9 to 27.6 bar, preset 预设定: 13.8bar 10.3 to 103 bar, preset 预设定: 56bar 27.6 to 207 bar, preset 预设定: 103bar
温度(Temperature):	-40°F to +250°F (-40°C to +120°C)
过滤(Filtration):	See page (参见) N-1
油液(Fluids):	Mineral-based fluids with viscosities of 7.4 to 420 cSt.(矿物油粘度)
插孔(Cavity):	10-3, See page M-2
阀块材料(Body Material):	6061-T6 aluminum alloy rated to 207bar, Steel & Ductile iron rated to 350bar 6061-T6铝, 允许使用最大压力207bar 钢和球铁允许使用最大压力350bar

SYMBOL



压力 - 流量曲线 PRESSURE DROP VS.FLOW



订货代号 TO ORDER

LPPR - 10 - * * - * / ** - * ***

┌───┐
┌───┐
┌───┐
┌───┐
┌───┐
┌───┐

1
2
3
4
5
6

1 功能

LPPR= 先导式减压 / 溢流阀
Pilot-operated Pressure
Reducing/Relieving Valve

2 规格 Size

10=10 规格

3 弹簧调压范围 Spring Ranges

4=100-400psi(6.9-27.6bar)
Preset:200psi(13.8bar)
15=150-1500psi(10.3-103bar)
Preset:800psi(56bar)
30=400-3000psi(27.6-207bar)
Preset:1500psi(103bar)

4 调节 Adjustment

K= 调节手轮 1-1/2'Dia Knob
内六角调节杆 (Omit for 1/4 Hex Allen head)

5 设定压力 Setting In Bar

空白 Blank= 预设定 Preset
例 Example:0100=100Bar

6 阀块油口 Body Porting

空白 Blank= 不带阀块 None
6T=SAE6
8T=SAE8
2G=G 1/4
3G=G 3/8

※ 阀块详见章节 K-5
其它螺纹油口也是可选择的
Other Porting is Available

E

安装尺寸 INSTALLATION DIMENSIONS

Unit=Millimeters

