

LPS-08

顺序阀

说明 DESCRIPTION

A cartridge-style spool-type sequence valve with internal pilot and drain

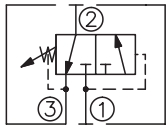
内控内排滑阀型顺序阀

工作 OPERATION

In its steady state, the valve blocks flow at ①, while allowing flow to pass from ② to ③. On attainment of a pre-determined pressure at ①, the cartridge shifts to open ① to ②.

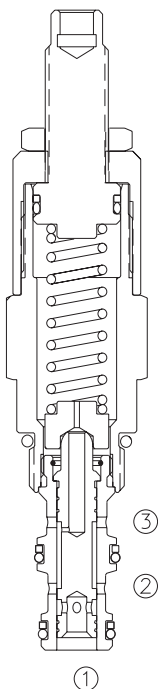
在稳定状态, ①口与②口不通, ②到③通; 在①口达到预设定的压力时, ①到②打开。

SYMBOL

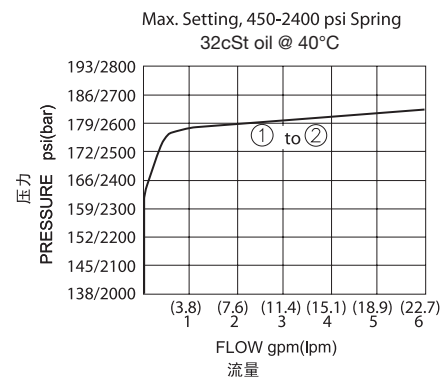
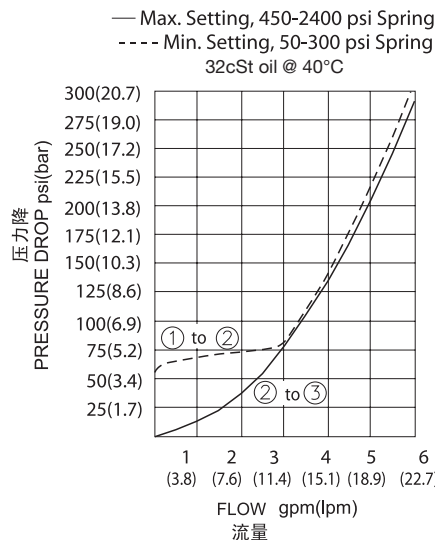


技术参数 SPECIFICATIONS

工作压力(Operating Pressure):	240bar
流量(Flow):	See PRESSURE DROP VS. FLOW graph.
内泄漏(Internal Leakage):	82 cc/min. max. to 85% of nominal setting
弹簧调压范围(Standard Spring Ranges):	3.4- 20.7 bar, preset预设:10 bar 6.9- 41.4 bar, preset预设:21 bar 10.3- 89.7 bar, preset预设:45 bar 31.0-165.5 bar, preset预设:83 bar
温度(Temperature):	-40°F to +250°F(-40°C to +120°C)
过滤(Filtration):	See page (参见) N-1
油液(Fluids):	Mineral-based fluids with viscosities of 7.4 to 420 cSt.(矿物油粘度)
插孔(Cavity):	08-3, See page M-1
阀块材料(Body Material):	6061-T6 aluminum alloy rated to 207bar, Steel & Ductile iron rated to 350bar 6061-T6铝, 允许使用最大压力207bar 钢和球铁允许使用最大压力350bar



压力 - 流量曲线 PRESSURE DROP VS.FLOW



订货代号 TO ORDER

LPS - 08 - * * - * / ** - * ***

┌───┐
┌───┐
┌───┐
┌───┐
┌───┐
┌───┐

1
2
3
4
5
6

1 功能

LPS= 顺序阀
Sequence Valve With Internal Pilot and Drain

2 规格 Size

08=08 规格

3 弹簧调压范围 Spring Ranges

3=50-300psi(3.4-20.7bar)
Preset:145psi(10bar)
6=100-600psi(6.9-41.4bar)
Preset:300psi(21bar)
13=150-1300psi(10.3-89.7bar)
Preset:650psi(45bar)
24=450-2400psi(31.0-165.5bar)
Preset:1200psi(83bar)

4 调节 Adjustment

K= 调节手轮 1-1/2'Dia Knob
内六角调节杆 (Omit for 1/4' Hex Allen head)

5 设定压力 Setting In Bar

空白 Blank= 预设定 Preset
例 Example:0120=120Bar

6 阀块油口 Body Porting

空白 Blank= 不带阀块 None
4T=SAE4
6T=SAE6
2G=G 1/4
3G=G 3/8

※ 阀块详见章节 K-2

其它螺纹油口也是可选择的

Other Porting is Available

E

安装尺寸 INSTALLATION DIMENSIONS

Unit=Millimeters

