

LPSRV2-08

先导式溢流阀

说明 DESCRIPTION

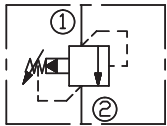
A cartridge-style pilot-operated spool-type relief valve
 先导滑阀式溢流阀

工作 OPERATION

The valve prevents flow from ① to ② until pressure at ① exceeds the set crack pressure and opens the pilot section. The pilot flow creates a pressure differential across the spool which causes the valve to open allowing flow from ① to ② protecting the circuit from over pressurization. This cartridge relief valve offers a smooth transition in response to a load change in a hydraulic circuit.

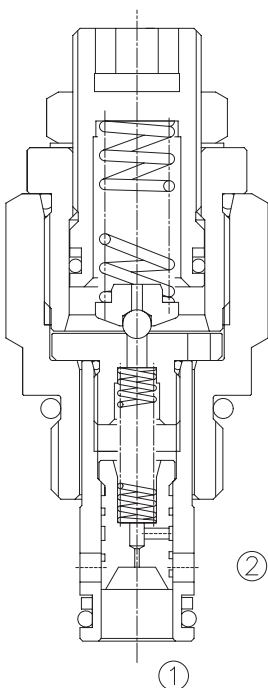
阀体①口和②口不通，直到①口压力超过设定压力且打开先导阀芯。这样，先导阀芯引起主阀芯两端压力差的变化，压力差达到一定时，①口和②口互通。此阀在液压系统中，平滑响应负载变化。

SYMBOL

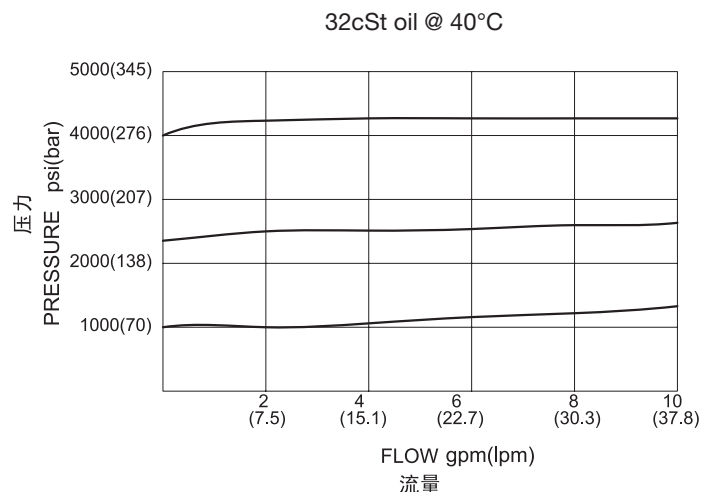


技术参数 SPECIFICATIONS

最大工作压力(Max. Operating Pressure):	350bar
流量(Flow):	See PRESSURE DROP VS. FLOW graph.
内泄漏(Internal Leakage):	82cc/min. max. to 90% of nominal setting pressure
弹簧调压范围(Standard Spring Ranges):	3.45bar to 103.5bar, preset 预设: 31bar 3.45bar to 207bar, preset 预设: 65.5bar 3.45bar to 350bar, preset 预设: 103bar
温度(Temperature):	-40°F to +250°F (-40°C to +120°C)
过滤(Filtration):	See page (参见) N-1
油液(Fluids):	Mineral-based fluids with viscosities of 7.4 to 420 cSt.(矿物油粘度)
插孔(Cavity):	08-2, See page M-1
阀块材料(Body Material):	Steel & Ductile iron rated to 350bar 钢和球铁允许使用最大压力350bar



压力 - 流量曲线 PRESSURE DROP VS. FLOW



订货代号 TO ORDER

LPSRV2 - 08 - * * / ** - * ***

┌───┐
1

┌───┐
2

┌───┐
3

┌───┐
4

┌───┐
5

1 功能
LPSRV2= 先导式溢流阀
Pilot-Operated Spool-type
Relief Valve

2 规格 Size
08=08 规格

3 弹簧调压范围 Spring Ranges
15=50-1500psi(3.5-103.5bar)
Preset:450psi(31bar)
30=50-3000psi(3.5-207bar)
Preset:950psi(65.5bar)
50=50-5000psi(3.5-350bar)
Preset:1500psi(103bar)

4 设定压力 Setting In Bar
空白 Blank= 预设定 Preset
例 Example:0150=150Bar

5 阀块油口 Body Porting
空白 Blank= 不带阀块 None
4T=SAE4
6T=SAE6
2G=G 1/4
3G=G 3/8

※ 阀块详见章节 K-1
其它螺纹油口也是可选择的
Other Porting is Available

E

安装尺寸 INSTALLATION DIMENSIONS

Unit=Millimeters

