

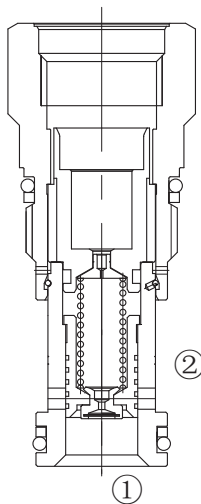
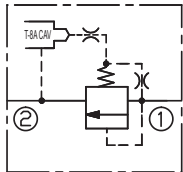
LRPEC-8WN

先导式溢流阀主级

说明 DESCRIPTION

A cartridge-style, pilot operated, balanced piston relief main stage with integral T-8A control cavity
 先导控制式，平衡滑阀式，溢流阀主级 带集成 T-8A 控制插孔

SYMBOL



工作 OPERATION

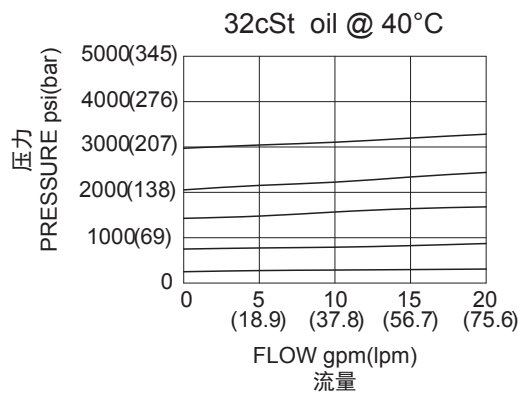
This valve is a normally closed modulating element that incorporates an integral pilot control cavity. It is a balanced piston design. The pilot control cavity will accept any T-8A pressure control cartridge. When the pressure at the inlet (port ①) reaches the pilot control cartridge's setting, the modulating element starts to open to tank (port ②), throttling flow to regulate the pressure. The pilot cartridge's setting determines the difference in pressure between port ① and port ②.

此类阀为带集成先导级控制插孔的常闭调节元件。它为平衡滑阀结构设计。先导级控制插孔可接受任何 T-8A 插孔的压力控制插装阀。当进口（①口）压力达到先导级控制阀的设定，阀开始向油箱（②口）溢流，节流以调节压力。先导级控制阀的设定决定了①口与②口之间的压力降。

技术参数 SPECIFICATIONS

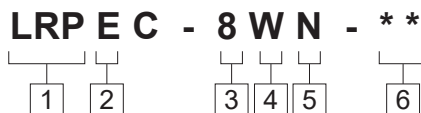
最大工作压力 (Max. Operating Pressure):	350bar
流量 (Flow) :	See PRESSURE DROP VS.FLOW graph.
内泄漏 (Internal Leakage):	32 ml/min. at 70 bar
温度 (Temperature):	-40°F to +250°F(-40°C to +120°C)
过滤 (Filtration):	See Page (参见) N-1
油液 (Fluids):	Mineral-based fluids with viscosities of 7.4 to 420 cSt. (矿物油粘度)
插孔 (Cavity):	SUN T-10A,See page M-7
阀块材料 (Body Material):	Steel & Ductile iron rated to 350bar 钢和球铁允许使用最大压力350bar

压力 – 流量曲线 PRESSURE DROP VS.FLOW



Pilot control provided by Proportional Pilot Relief, Model LRBAP-XAN

订货代号 TO ORDER



- 1 功能
LRP= 先导式溢流阀主级
Pilot-operated,Balanced
Piston ,Relief Main Stage

- 2 流量 Capacity
E=95L/min

- 3 控制方式 Control
8= 集成 T-8A 插孔控制
Integral T-8A Control Cavity

- 4 最小控制压力 Minimum Control Pressure
W=100psi(7.0bar)

- 5 油封 Seal Kits
N= 丁晴橡胶 Buna N
V= 氟橡胶 Viton

- 6 阀块油口 **Body Porting**
空白 Blank= 不带阀块 None
8T=SAE8
10T=SAE10
3G=G 3/8
4G=G 1/2

※ 阀块详见章节 K-13
其它螺纹油口也是可选择的
Other Porting is Available



安装尺寸 **INSTALLATION DIMENSIONS**

Unit=Millimeters

