

LRVEA

先导式溢流阀 (外接口控制)

说明 DESCRIPTION

A cartridge-style ventable, pilot operated, balanced piston relief valve

外接口控制, 先导式, 平衡滑阀溢流阀

工作 OPERATION

The valve is normally closed pressure regulating valves. When the pressure at the inlet (port ①) reaches the valve setting, the valve starts to open to tank (port ②), throttling flow to regulate the pressure. They provide a vent port (port ③) that connects between the main piston and pilot stage to provide for remote control by other pilot or 2-way valves. These valves are accurate, have low pressure rise vs. flow, they are smooth and quiet, and are moderately fast.

此阀为常闭压力调节阀。当进口 (口①) 压力达到阀设定值, 阀开始向油箱 (口②) 溢流, 节流以调节压力。此类阀在主级活塞和先导级之间提供了一个外接口 (口③), 可以接入其它先导级控制阀或 2 通阀实现远程控制。此类阀压力调节精度高, 压力波动随流量变化小, 并且调节平稳, 噪声小, 响应速度适中。

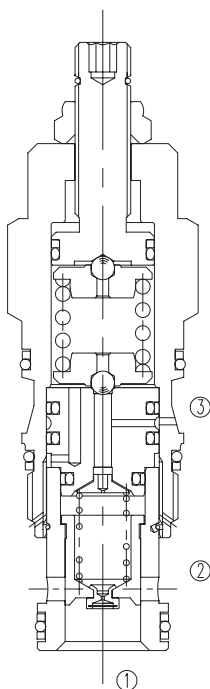
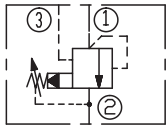
技术参数 SPECIFICATIONS

| | |
|---------------------------------|---------------------------------|
| 工作压力(Operating Pressure): | 350bar |
| 流量(Capacity): | See PRESSURE DROP VS.FLOW graph |
| 内泄漏(Internal Leakage): | 50 cc/min(毫升/分)Max at 70bar. |
| 弹簧调压范围(Standard Spring Ranges): | |

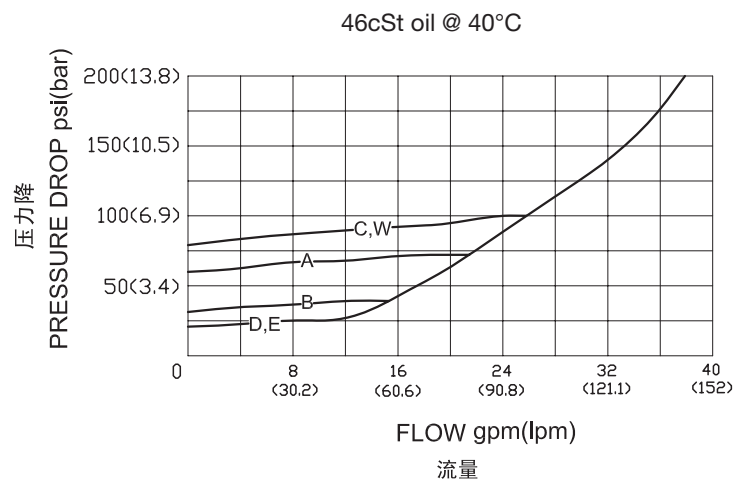
- A 7-210 bar; Preset(预设):70bar
- W 10.5-315 bar; Preset(预设):70bar
- B 3.5-105 bar; Preset(预设):70bar
- C 10.5-420 bar; Preset(预设):70bar
- D 1.7- 55 bar; Preset(预设):28bar
- E 1.7- 28 bar; Preset(预设):14bar

| | |
|----------------------|---|
| 温度(Temperature): | -40°F to +250°F(-40°C to +120°C) |
| 过滤(Filtration): | See page (参见) N-1 |
| 油液(Fluids): | Mineral-based fluids with viscosities of 7.4 to 420 cSt.(矿物油粘度) |
| 插孔(Cavity): | SUN T-2A, See page M-6 |
| 阀块材料(Body Material): | Steel & Ductile iron rated to 350bar 钢和球铁允许使用最大压力350bar |

SYMBOL



压力 - 流量曲线 PRESSURE DROP VS.FLOW



订货代号 TO ORDER

LRV E A - * * * - * *

1
2
3
4
5
6

- | | | |
|--|---|--|
| <p>1 功能 LRV= 先导式溢流阀 Ventable Fast-acting, Pilot Operated Balanced Piston Relief Valve</p> | <p>4 弹簧调压范围 Spring Ranges A=100-3000psi(7-210bar) Preset:1000psi(70bar) W=150-4500psi(10.5-315bar) Preset:1000psi(70bar) B=50-1500psi(3.5-105bar) Preset:1000psi(70bar) C=150-6000psi(10.5-420bar) Preset:1000psi(70bar) D=25-800psi(1.7-55bar) Preset:400psi(28bar) E=25-400psi(1.7-28bar) Preset:200psi(14bar) Factory Pressure setting established at 15L/min; 工厂的设定是指溢流阀开启 (流量为 15L/min) 时的压力;</p> | <p>6 阀块油口 Body Porting 空白 Blank= 不带阀块 None 8T=SAE8 10T=SAE10 3G=G 3/8 4G=G 1/2</p> |
| <p>2 流量 Capacity E=120L/min</p> | <p>5 油封 Seal Kits N= 丁晴橡胶 Buna N V= 氟橡胶 Viton</p> | <p>※ 阀块详见章节 K-23—K-24 其它螺纹油口也是可选择的 Other Porting is Available</p> |
| <p>3 控制方式 Control L= 标准螺钉调节 Standard Screw Adjustment</p> | | |

安装尺寸 INSTALLATION DIMENSIONS

Unit=Millimeters

