

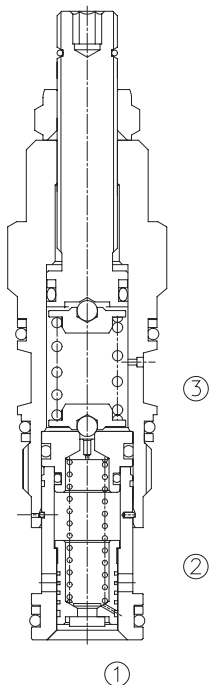
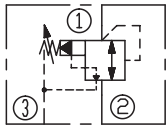
LSQDB

先导式顺序阀 (切断型)

说明 DESCRIPTION

A cartridge-style kick-down pilot-operated spool-type sequence valve with internal pilot and spring chamber drain
 内控内排，切断型先导式顺序阀

SYMBOL



工作 OPERATION

Kick-down sequence valves will kick completely open and remain open once the pressure at the inlet(port ①)exceeds the valve setting, creating an unrestricted flow path from ① to ② (sequence). The pressure setting at port ① is relative to the drain (port ③). The valve remains open as long as the pressure at port ① exceeds the pressure at port ② . To reset the valve, pressure at port ① must fall below the setting of the valve, flow from ① to ② must cease; pressure at port ② must be equal to or greater than the pressure at port ①.

一旦进油口 (油口①) 的压力超过阀设定值，切断型顺序阀将会开启，并保持开启的状态，从而实现油口①到油口②自由流通。油口①的设定压力与外泄口 (油口③) 压力有关。当油口①的压力超过油口②，阀门将一直处于开启状态。仅在油口① 的压力低于阀的设定压力基础上，油口①到油口②无油液流动，或者油口②的压力大于等于油口①的压力，此阀才能复位。

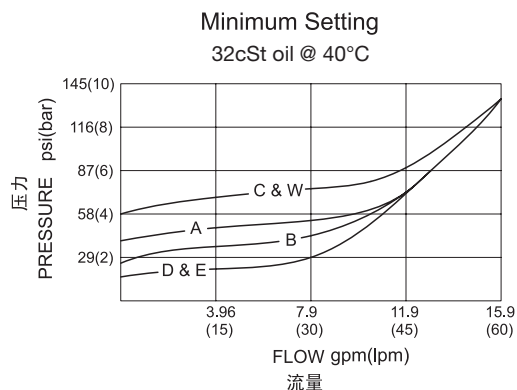
特性 FEATURES

- Should not be used in load holding applications.
 不应该在有保压要求工况中使用；
- The main stage orifice is protected by a 150 micron stainless steel screen.
 主油孔通过一个 150 微米的不锈钢过滤器来保护；
- Pressure at port ③ is directly additive to the valve setting at a 1:1 ratio and should not exceed 5000 psi (350 bar).
 油口③的压力按 1:1 叠加到阀的设定值上，且不应该超过 5000 psi；
- Intended for use on the actuator side of the system as flow through the valve must cease for the valve to reset. If used on the pump side of a system, pump flow must be shut off for the valve to reset.
 由于阀的复位要求无油液流动，因此主要适用于驱动机构端。如果用在液压泵端，阀复位时必须关闭泵。

技术参数 SPECIFICATIONS

最大工作压力(Max.Operating Pressure):	350 bar
流量(Capacity):	See PRESSURE DROP VS. FLOW graph.
内泄漏(Internal Leakage):	33 cc/min.@70bar
温度(Temperature):	-40°F to +250°F(-40°C to +120°C)
过滤(Filtration):	See page (参见) N-1
油液(Fluids):	Mineral-based fluids with viscosities of 7.4 to 420 cSt.(矿物油粘度)
插孔(Cavity):	SUN T-11A, See page M-6
阀块材料(Body Material):	Steel & Ductile iron rated to 350bar 钢和球铁允许使用最大压力350bar

压力 – 流量曲线 PRESSURE DROP VS.FLOW



订货代号 TO ORDER

LSQ * B - * * * - * *

└──┬──┘
└──┬──┘
└──┬──┬──┬──┘
└──┬──┘

1
2
3
4
5
6

1 功能

LSQ= 先导式顺序阀
 Kick-down Pilot-operated
 Spool-type Sequence Valve

2 流量 Capacity

D=60L/min

3 控制方式 Control

L=Standard Screw Adjustment

4 弹簧调压范围 Spring Ranges

A=100-3000psi(7-210bar)
 预设定 Preset:1000psi(70bar)
 B=50-1500psi(3.5-105bar)
 预设定 Preset:1000psi(70bar)
 C=150-6000psi(10.5-420bar)
 预设定 Preset:1000psi(70bar)
 D=25-800psi(1.7-55bar)
 预设定 Preset:400psi(28bar)
 E=25-400psi(1.7-28bar)
 预设定 Preset:200psi(14bar)
 W=150-4500psi(10.5-315bar)
 预设定 Preset:1000psi(70bar)
 Factory Pressure setting established at 15L/min;
 工厂的设定是指顺序阀开启(流量为15L/min)时的压力;

5 油封 Seal Kits

N= 丁晴橡胶 Buna N
 V= 氟橡胶 Viton

6 阀块油口 Body Porting

空白 Blank= 不带阀块 None
 6T=SAE6
 8T=SAE8
 3G=G 3/8
 4G=G 1/2

※ 阀块详见章节 K-17—K-22
 其它螺纹油口也是可选择的
 Other Porting is Available

E

安装尺寸 INSTALLATION DIMENSIONS

Unit=Millimeters

