

LACR75.M20

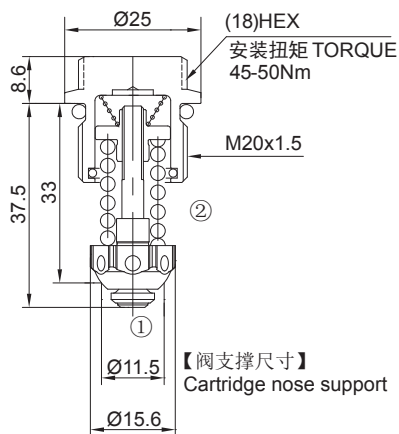
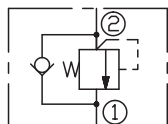
直动式补油溢流阀

说明 DESCRIPTION

A cartridge-style direct-acting poppet-type anti-cavitation relief valve

直动座阀式补油溢流阀

SYMBOL



工作 OPERATION

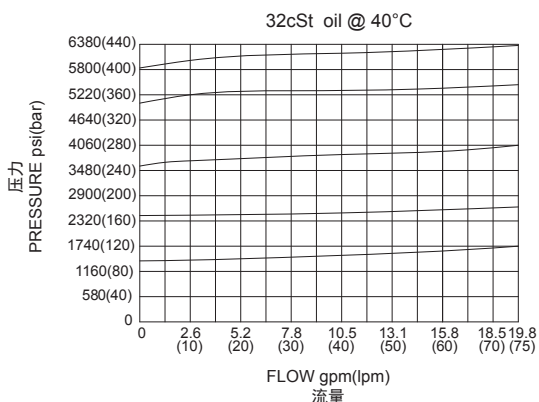
Flow is free from ① to ② until pressure increases to meet the selected valve setting, allowing relief flow through port ① to tank. This valve combines the typical function of shock relief valve (direct acting) and anti-cavitation function through the check valve. The direct action and the specific design allow a very fast opening and closing.

Note: to obtain a good leak proof performance coin the cavity seat using a loose valve seat as a coning tool. Torque to be applied : 4.5 ± 2 Nm.

液体从①口到②口自由流动，直到压力上升到符合所选阀的设置压力，允许通过①口溢流到油箱。结合溢流阀（直动）的典型功能和单向阀的补油功能。直动式和特殊设计使阀芯快速打开和关闭。注意：为了得到良好的防泄漏性能，使用可活动的阀座作为制造工具来制造型腔基座。要运用扭矩：4.5±2Nm 调节。

技术参数 SPECIFICATIONS

最大工作压力 (Max. Operating Pressure):	420bar
最大流量 (Max. Flow) :	75l/min
内泄漏 (Internal Leakage):	15 drops/min.(滴/分) max. to 80% of nominal setting
弹簧调压范围 (Standard Spring Ranges):	20 to 100 bar; 101 to 170 bar; 171 to 250 bar; 251 to 350 bar; 351 to 420 bar;
温度 (Temperature):	-40°F to +250°F(-40°C to +120°C)
过滤 (Filtration):	See Page (参见) N-1
油液 (Fluids):	Mineral-based fluids with viscosities of 7.4 to 420 cSt. (矿物油粘度)
插孔 (Cavity):	VH003, See page M-28
阀块材料 (Body Material):	Steel & Ductile iron rated to 350bar 钢和球铁允许使用最大压力350bar



订货代号 TO ORDER

LACR75 . M20 - ** / ***

1

2

3

4

1 功能
LACR75= 补油溢流阀
Anti-Cavitation Relief Valve

2 规格 Size
M20=M20 规格

3 弹簧调压范围 Spring Ranges
10=290-1450psi(20-100bar)
17=1465-2465psi(101-170bar)
25=2480-3625psi(171-250bar)
35=3640-5075psi(251-350bar)
42=5090-6090psi(351-420bar)
Factory pressure setting established at 10L/min;
工厂的设定是指溢流阀开启[流量为10L/min]时的压力;

4 设定压力 Setting In Bar
空白 Blank= 预设定 Preset
例 Example:060=60Bar