

LCV-10-B

单向阀 钢球型

说明 DESCRIPTION

A cartridge-style ball-type check valve

球阀式螺纹插装单向阀

工作 OPERATION

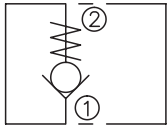
Pressure at ① overcomes the spring-bias ball and allows free flow from ① to ② .

Flow in the opposite direction, from ② to ① ,is blocked by the ball.

当在①口的压力超过开启压力，①到②开启；

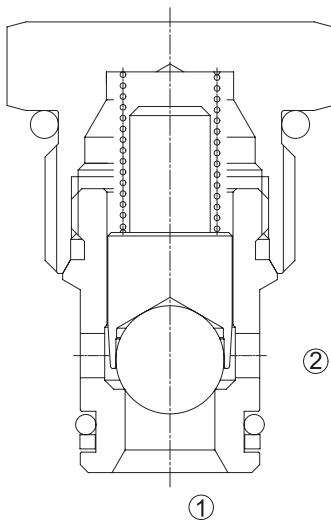
在反方向，②到①关闭。

SYMBOL

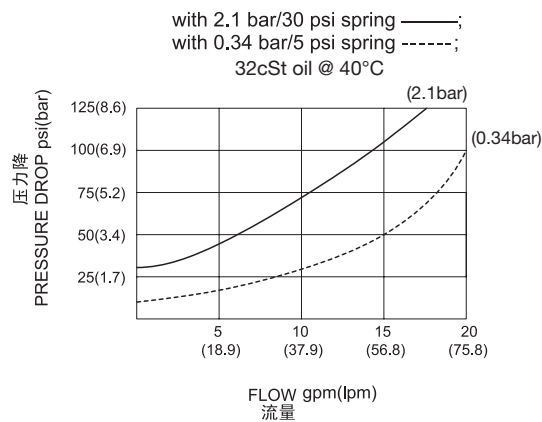


技术参数 SPECIFICATIONS

工作压力(Operating Pressure):	250bar
流量(Flow):	See PRESSURE DROP VS.FLOW graph.
内泄漏(Internal Leakage):	2 drops/min(滴/分). max. at 250bar
开启压力(Crack Pressures):	0.34=0.34bar 1.0=1.0bar 2.1=2.1bar 2.8=2.8bar 4.8=4.8bar 6.9=6.9bar 13.6=13.6bar 20.4=20.4bar
温度(Temperature):	-40°F to +250°F(-40°C to +120°C)
过滤(Filtration):	See page (参见) N-1
油液(Fluids):	Mineral-based fluids with viscosities of 7.4 to 420 cSt.(矿物油粘度)
插孔(Cavity):	10-2,See page M-2
阀块材料(Body Material):	6061-T6 aluminum alloy rated to 207bar, Steel & Ductile iron rated to 350bar 6061-T6铝,允许使用最大压力207bar 钢和球铁允许使用最大压力350bar



压力 – 流量曲线 PRESSURE DROP VS.FLOW



订货代号 TO ORDER

LCV - 10 - B - * * - * *

1
2
3
4
5

1 功能
LCV= 单向阀 Check Valve

2 规格 **Size**
10=10 规格

3 类型
B= 钢球型 Ball

4 开启压力 **Cracking Pressure**
 0.34=0.34bar
 1.0=1.0bar
 2.1=2.1bar
 2.8=2.8bar
 4.8=4.8bar
 6.9=6.9bar
 13.6=13.6bar
 20.4=20.4bar

5 阀块油口 **Body Porting**
 空白 Blank= 不带阀块 None
 6T=SAE6
 8T=SAE8
 3G=G 3/8
 4G=G 1/2

※ 阀块详见章节 K-4
 其它螺纹油口也是可选择的
 Other Porting is Available

D

安装尺寸 INSTALLATION DIMENSIONS

Unit=Millimeters

