

# LCPCA

## 平衡阀

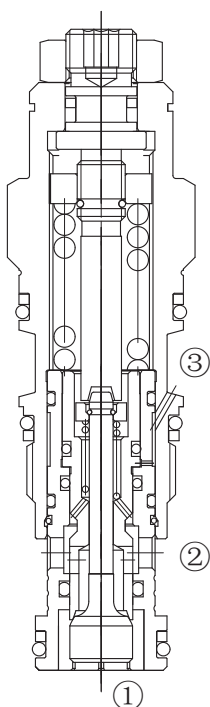
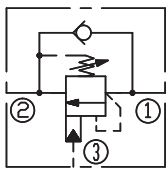
标准型 /standard

### 说明 DESCRIPTION

A cartridge-style standard capacity counterbalance valve with sealed pilot

平衡阀

### SYMBOL



### 工作 OPERATION

Counterbalance valves with pilot assist are meant for control on overrunning load. The check valve allows free flow from port ② to port ① while a direct-acting, pilot-assisted relief valve controls flow from port ① to port ②. Pilot assist at port ③ lowers the effective setting of the relief valve at a rate determined by the pilot ratio.

带先导开启平衡阀用于控制超越负载工况。油液从②口到①口单向自由流动；油液经直动，先导辅助从①口溢流到②口，③口是溢流辅助控制口，按控制比降低溢流功能的有效设定值。

### 特性 FEATURES

- Counterbalance valves should be set at least 1.3 times the maximum load induced pressure.

最大设定压力至少为最大负载压力的 1.3 倍。

- Backpressure at port ② adds to the effective relief setting at a ratio of 1 plus the pilot ratio times the backpressure.

②口的背压按“控制比 +1”的倍数加到溢流阀的设定值上即增加值 = (1+ 控制比) × 压力值。

- Reseat exceeds 85% of set pressure when the valve is standard set. Setting lower than the standard set pressure may result in lower reseal percentages.

标准设定时，闭合压力值大于设定压力值的 85%；低于标准设定，则闭合压力值的百分比相应降低。

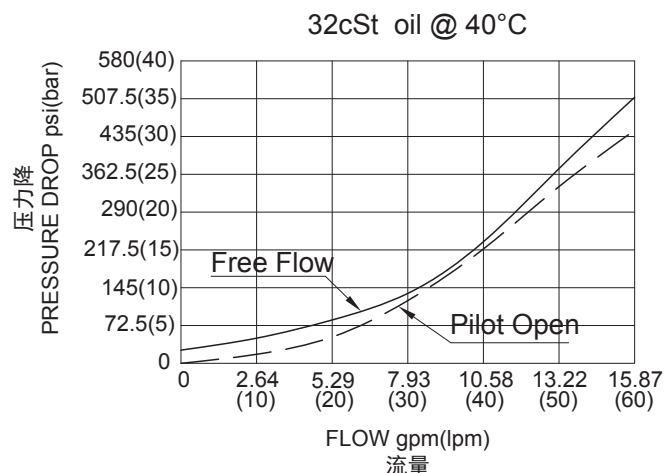
- Factory pressure setting established at 30cc/min(2 in3/min).

工厂的设定是指当溢流阀开启（流量为 30cc/min）时的压力。

### 技术参数 SPECIFICATIONS

最大设定值 (Max. Setting):	280bar
最大负载 (Max. Recommended Load Pressure at Max. Setting):	215bar
流量 (Flow) :	See PRESSURE DROP VS.FLOW graph.
内泄漏 (Internal Leakage):	5 drops/min.(滴/分)
控制比 (Pilot Rate):	3:1
温度 (Temperature):	-40°F to +250°F(-40°C to +120°C)
过滤 (Filtration):	See Page (参见) N-1
油液 (Fluids):	Mineral-based fluids with viscosities of 7.4 to 420 cSt. (矿物油粘度)
插孔 (Cavity):	SUN T-11A,See page M-6
阀块材料 (Body Material):	6061-T6 aluminum alloy rated to 207bar, Steel & Ductile iron rated to 350bar 6061-T6铝，允许使用最大压力207bar 钢和球铁允许使用最大压力350bar

### 压力 - 流量曲线 PRESSURE DROP VS.FLOW



## 订货代号 TO ORDER

**LCP \* A - \* \* \* - \*\***

1
2
3
4
5
6
7

<p><b>1</b> 功能 LCP= 平衡阀 Counterbalance Cartridge Valve</p>	<p><b>5</b> 弹簧调压范围 Spring Ranges H=1000-4000psi(70-280bar) Preset:3000psi(210bar)(Check:1.7bar) I=400-1500psi(28-105bar) Preset:1000psi(70bar)(Check:1.7bar) A=1000-4000psi(70-280bar) Preset:3000psi(210bar)(Check:0.3bar) B=400-1500(28-105bar) Preset:1000psi(70bar)(Check:0.3bar)</p>	<p><b>7</b> 阀块油口 Body Porting 空白 Blank= 不带阀块 None 8T=SAE8 10T=SAE10 3G=G 3/8 4G=G 1/2</p>
<p><b>2</b> 流量 Flow G=60L/min</p>	<p><b>6</b> 油封 Seal Kits N= 丁晴橡胶 Buna N V= 氟橡胶 Viton</p>	<p>※ 阀块详见章节 K-17—K-22 其它螺纹油口也是可选择的 Other Porting is Available</p>
<p><b>3</b> 控制比 Pilot Ratio A=3:1</p>		
<p><b>4</b> 控制方式 Control L= 标准螺钉调节 Standard screw Adjustment</p>		

G

## 安装尺寸 INSTALLATION DIMENSIONS

Number of Counter-clockwise Turns  
全调3.75圈

Unit=Millimeters

