

LCPC-14S

流量阀

说明 DESCRIPTION

An in-line non-adjustable externally-ported pressure-compensated flow control valve with free reverse

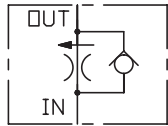
反向自由流，压力补偿型，管接流量阀

工作 OPERATION

The valve maintains a constant flow within specified accuracies from inlet to outlet regardless of downstream load pressure. When flow produces a minimum predetermined pressure differential across the compensator spool control orifice, the spool shifts against the spring force to throttle the flow and maintain the flow setting. In the reverse direction the spool shifts to permit free flow.

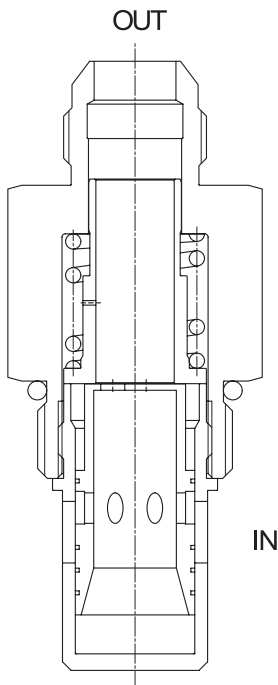
不管负载压力如何变化，从“in”口流向“out”口的流量都能保持在一定的范围内。当油通过固定节流孔时，引起极小的压力差，阀芯开始响应负载变化，通过压力补偿，可维持精确的流量。油液从“out”口到“in”口反方向自由流动。

SYMBOL

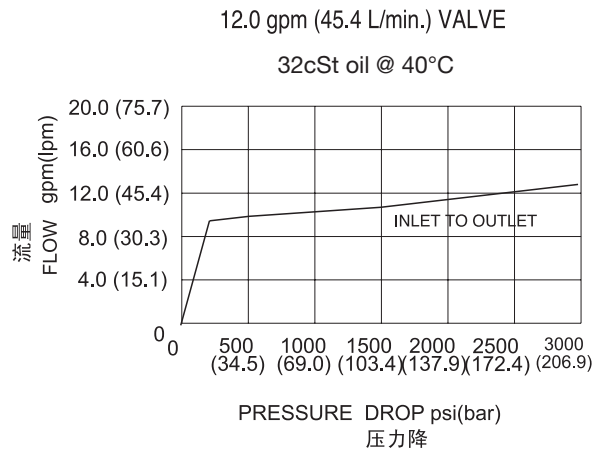


技术参数 SPECIFICATIONS

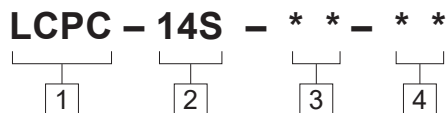
工作压力(Operating Pressure):	207bar
流量设定(Flow Setting):	8 gpm (30.3 l/min.) 12 gpm(45.4 l/min.) 17 gpm(64.3 l/min.) 24 gpm(90.8 l/min.)
流量控制精度(Flow Maintenance):	all valves: +5% -15%
温度(Temperature):	-40°F to +250°F(-40°C to +120°C)
过滤(Filtration):	See page (参见) N-1
油液(Fluids):	Mineral-based fluids with viscosities of 7.4 to 420 cSt.(矿物油粘度)
插孔(Cavity):	14S, See page M-16
阀块材料(Body Material):	6061-T6 aluminum alloy rated to 207bar, Steel & Ductile iron rated to 350bar 6061-T6铝,允许使用最大压力207bar 钢和球铁允许使用最大压力350bar



压力 - 流量曲线 PRESSURE DROP VS.FLOW



订货代号 TO ORDER



- | | | |
|---|---|---|
| <p>1 功能
LCPC= 反向自由流, 压力补偿型, 管接流量阀
In-line non-adjustable externally-ported
pressure-compensated flow control valve
with free reverse check</p> | <p>3 流量设定 Flow Setting
8=8.00gpm(30.3L/min)
12=12.00gpm(45.4L/min)
17=17.00gpm(64.3L/min)
24=24.00gpm(90.8L/min)</p> | <p>4 阀块油口 Body Porting
空白 Blank= 不带阀块 None
8T=SAE8
10T=SAE10</p> |
| <p>2 规格 Size
14S=14S 规格</p> | <p>其它螺纹油口也是可选择的
Other Porting is Available</p> | |

F

安装尺寸 INSTALLATION DIMENSIONS

Unit=Millimeters

