

LSV2-10-35A

三位五通电磁阀

说明 DESCRIPTION

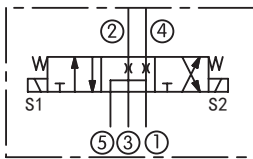
A solenoid operated, 5-way, 3-position, direct acting, spool-type, cartridge valve

三位，五通，滑阀式电磁阀

工作 OPERATION

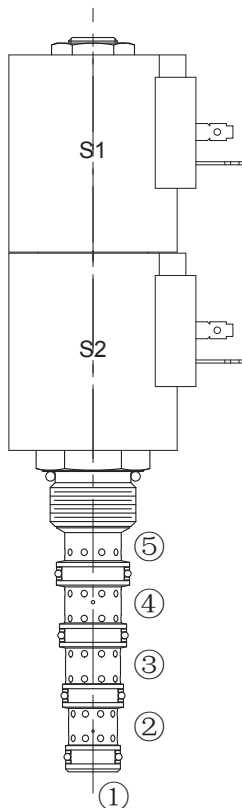
When de-energized, port ①, ③ and ⑤ are connected together, port ② and ④ bleed through an orifice to port ①. When coil S1 energized, the spool shifts up to block port ⑤, while allowing flow from ④ to ① and from ③ to ②. When coil S2 energized, the spool shifts down to block port ⑤, while allowing flow from ② to ① and from ③ to ④. 失电时，①③⑤互通，②和④通过节流孔与①连通。当线圈 S1 得电时，⑤关闭，④和①通，③和②通。当线圈 S2 得电时，⑤关闭，②和①通，③和④通。

SYMBOL

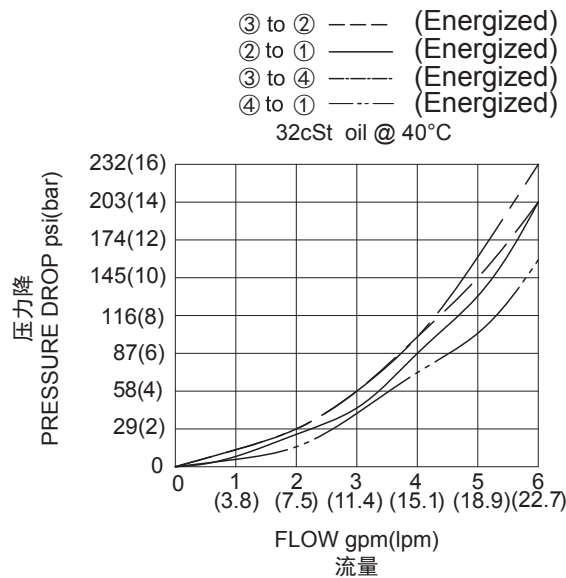


技术参数 SPECIFICATIONS

工作压力 (Operating Pressure):	207bar
流量 (Flow):	See PRESSURE DROP VS.FLOW graph.
内泄漏 (Internal Leakage):	197 ml/min.(毫升/分) max. at 207bar
温度 (Temperature):	-40°F to +212°F(-40°C to +100°C)
线圈额定负载 (Coil Duty Rating):	Continuous from 85% to 115% of nominal voltage(连续工作电压)
过滤 (Filtration):	See Page (参见) N-1
油液 (Fluids):	Mineral-based fluids with viscosities of 7.4 to 420 cSt.(矿物油粘度)
插孔 (Cavity):	10-5, See page M-28
阀块材料 (Body Material):	6061-T6 aluminum alloy rated at 207Bar, Steel & Ductile iron rated at 350Bar 6061-T6铝, 允许使用最大压力207Bar 钢和球铁允许使用最大压力350Bar



压力 - 流量曲线 PRESSURE DROP VS.FLOW



订货代号 TO ORDER

LSV2 - 10 - 35 A - * * - * *

┌───┐
┌───┐
┌───┐
┌──┐└──┐
┌──┐└──┐
┌──┐└──┐

1
2
3
4
5
6

<p>1 功能 LSV2= 电磁阀 Solenoid Valve</p>	<p>4 电压 Voltage 1=12 VDC 2=24 VDC 3=110 VAC 4=220 VAC 5=10 VDC 10=20 VDC</p>	<p>6 阀块油口 Body Porting 空白 Blank= 不带阀块 None 6T=SAE6 8T=SAE8 2G=G 1/4 3G=G 3/8</p>
<p>2 规格 Size 10= 10 规格</p>	<p>5 线圈连接 Coil Connection D= Double Lead 双线 H= Hirschmann 三插 C= Conduit 带嵌套 ER= Deutsch Connector(Water-proof Coil) 德意志插座 (防水线圈) B= Double Spade 双插</p>	<p>其它螺纹油口也是可选择的 Other Porting Is Available</p>

安装尺寸 INSTALLATION DIMENSIONS

Coil Must Be Installed With Letter Up
安装线圈时，字母必须朝上。

Unit=Millimeters

