

LCDK3-2

二通直动式减压阀

说明 DESCRIPTION

A cartridge-style, direct-acting, 2-way, ball-type pressure reducing valve.

二通直动式减压阀

工作 OPERATION

In its steady state, the valve allows flow from ① to ②. The spring chamber is vented to atmosphere. On attainment of a pre-determined pressure at ②, the cartridge shifts to restrict input flow at ①, thereby regulating pressure at ②.

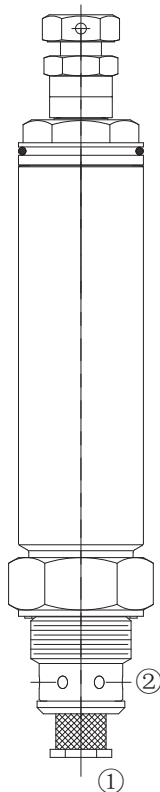
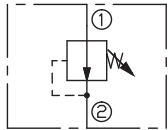
在稳定状态下，油从①口流向②口，弹簧腔连接大气。

当在②口的压力达到弹簧设定的压力时，阀芯提起，阻止油液从①流进，从而实现②口减压。

安装提示 ASSEMBLY INFORMATION

1. Before screwing in the valve, loosen the lock nut and sealing nut until the travel stop.
 2. Screw in the valve and tighten with the specified torque. The metallic sealing of the inlet to the outlet is formed between the facial sealing edge of the valve and the shoulder of the stepped hole in the basic body.
 3. Tighten lock nut and sealing nut with specified torque.
1. 拧入阀之前，将锁紧密封螺母旋回止挡位置。
 2. 拧入阀，并用规定的扭矩拧紧。阀前端的密封边和阀块内阶孔的棱边构成了输入侧到输出侧的金属密封。
 3. 用规定的扭矩拧紧锁紧密封螺母。

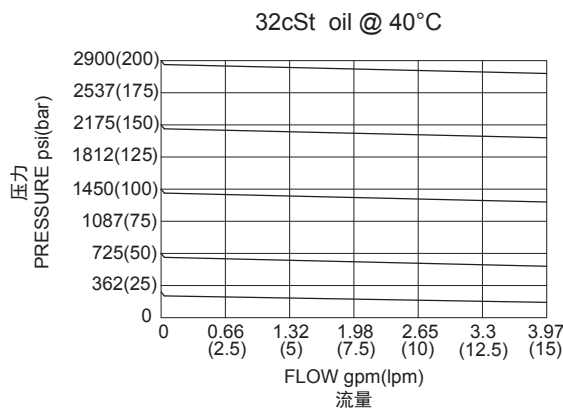
SYMBOL



技术参数 SPECIFICATIONS

| | |
|-----------------------------------|---|
| 最大工作压力 (Max. Operating Pressure): | 500bar |
| 流量 (Flow) : | See PRESSURE DROP VS.FLOW graph. |
| 内泄漏 (Internal Leakage): | <1 drops/min.(滴/分) in closed state |
| 闭合压力 (Reseat Pressure): | 80% of crack pressure 开启压力 (crack pressure at 0.95lpm/0.25gpm) |
| 弹簧调压范围 (Standard Spring Ranges): | 15 to 130 bar; preset 预设定: 130bar 20 to 200 bar; preset 预设定: 200bar 30 to 300 bar; preset 预设定: 300bar |
| 温度 (Temperature): | -40°F to +250°F (-40°C to +120°C) |
| 过滤 (Filtration): | See Page (参见) N-1 |
| 油液 (Fluids): | Mineral-based fluids with viscosities of 7.4 to 420 cSt. (矿物油粘度) |
| 插孔 (Cavity): | HAWE CDK3, See page M-30 |
| 阀块材料 (Body Material): | Steel & Ductile iron rated to 350bar 钢和球铁允许使用最大压力350bar |

压力 - 流量曲线 PRESSURE DROP VS.FLOW



订货代号 TO ORDER

LCDK 3 - 2 - * - ****

1

2

3

4

5

1 功能
LCDK= 二通直动式减压阀
Direct-Acting Pressure Reducing Valve

3 弹簧调压范围 Spring Ranges
2=290-2900psi(20-200bar)
Preset:2900psi(200bar)

5 阀块油口 Body Porting
空白 Blank= 不带阀块 None
6T=SAE6
8T=SAE8
3G=G 3/8

2 流量 Flow
3=12L/min

4 设定压力 Setting In Bar
空白 Blank= 预设定 Preset
例 Example:100=100Bar

其它螺纹油口也是可选择的
Other Porting is Available

E

安装尺寸 INSTALLATION DIMENSIONS

Unit=Millimeters

