

LCBRC78

平衡阀

说明 DESCRIPTION

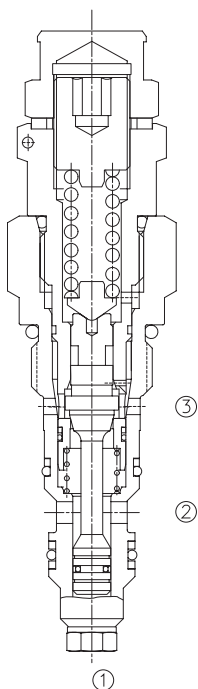
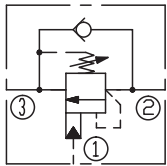
A cartridge-style standard capacity counterbalance valve
平衡阀

工作 OPERATION

When pressure at ③ rises above the spring bias pressure, the check seat is pushed away from the piston and flow is allowed from ③ to ②. When load pressure at ② rises above the pressure setting, the direct-acting, differential area relief function is activated and flow is relieved from ② to ③. With pilot pressure at ①, the pressure setting is reduced in proportion to the stated ratio of the valve, until fully open with free-flow from ② to ③. The spring chamber is drained to ③, and any back-pressure at ③ is additive to the pressure setting in all functions.

当③口压力升高超过单向阀开启压力时，单向阀③口到②口开启。当负载②口压力升高超过弹簧设定，②口到③口溢流过载。当先导①口的压力升高，溢流压力按阀的固定比例降低，直到②口到③口全开，弹簧腔与③口连通，③口背压叠加到阀的压力设定。

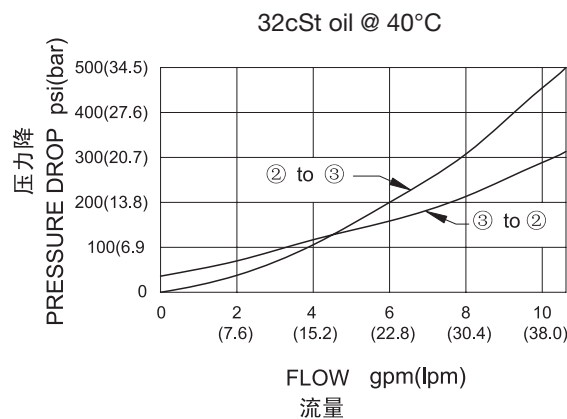
SYMBOL



技术参数 SPECIFICATIONS

最大工作压力(Max.Operating Pressure):	350bar
流量(Flow):	See PRESSURE DROP VS.FLOW graph.
压力设定(Pressure Setting):	Factory pressure setting established at 5 l/min. 工厂的设定是指当溢流阀开启时(流量为5 l/min.)的压力
控制比(Pilot Ratio):	4.1:1
单项阀开启压力(Check Cracking Pressure):	2.7bar
温度(Temperature):	-40°F to +250°F(-40°C to +120°C)
过滤(Filtration):	See page (参见) N-1
油液(Fluids):	Mineral-based fluids with viscosities of 7.4 to 420 cSt.(矿物油粘度)
插孔(Cavity):	10-3,See page M-2
阀块材料(Body Material):	Steel & Ductile iron rated to 350bar 钢和球铁允许使用最大压力350Bar

压力 - 流量曲线 PRESSURE DROP VS.FLOW



订货代号 TO ORDER

LCBRC78 - * * - * *

1 2 3

1 功能
LCBRC78= 平衡阀
Counterbalance Cartridge Valve

2 弹簧调压范围 Spring Ranges
50=1450-5000psi(100-350bar)
预设定Preset:3000psi(210bar)
(Q=5L/min)

3 阀块油口 **Body Porting**
空白 Blank= 不带阀块 None
6T=SAE6
8T=SAE8
2G=G 1/4
3G=G 3/8

※ 阀块详见章节 K-5
其它螺纹油口也是可选择的
Other Porting is Available

G

安装尺寸 INSTALLATION DIMENSIONS

Unit=Millimeters

