

# LTDRV6-08

## 差动式溢流阀

### 说明 DESCRIPTION

A cartridge-style direct-acting differential area poppet-type relief valve

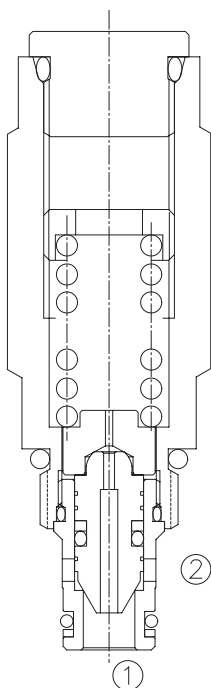
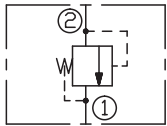
差动座阀式溢流阀

### 工作 OPERATION

The valve blocks flow from ② to ① until sufficient pressure is present at ② to force the poppet from its seat.

当②口压力达到设定压力时，从②口到①口才打开，以保持系统压力不超过设定值。

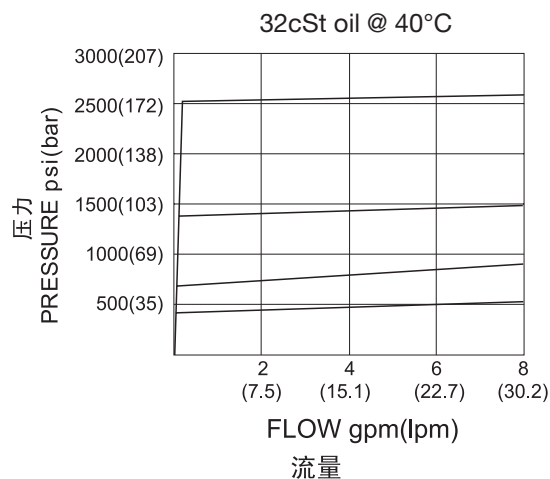
### SYMBOL



### 技术参数 SPECIFICATIONS

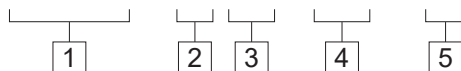
工作压力(Operating Pressure):	250bar
流量(Flow):	See PRESSURE DROP VS. FLOW graph.
内泄漏(Internal Leakage):	5 drops/min(滴/分). max. to 80% of nominal setting
闭合压力(Reseat Pressure):	80% of crack pressure 开启压力 (crack pressure at 0.95 lpm /0.25 gpm)
弹簧调压范围(Standard Spring Ranges):	3.45 to 27.59 bar, preset 预设定:13.8bar 10.34 to 48.3 bar, preset 预设定: 24bar 17.24 to 89.6 bar, preset 预设定: 45bar 17.24 to 227.59 bar; preset 预设定:114bar
温度(Temperature):	-40°F to +250°F(-40°C to +120°C)
过滤(Filtration):	See page (参见) N-1
油液(Fluids):	Mineral-based fluids with viscosities of 7.4 to 420 cSt.(矿物油粘度)
插孔(Cavity):	08-2, See page M-1
阀块材料(Body Material):	6061-T6 aluminum alloy rated to 207bar, Steel & Ductile iron rated to 350bar 6061-T6铝,允许使用最大压力207bar 钢和球铁允许使用最大压力350bar

### 压力 – 流量曲线 PRESSURE DROP VS.FLOW



## 订货代号 TO ORDER

LTDRV6 - 08 \* \* / \*\*\*\*\* - \* \*



### 1 功能

LTDRV6 = 差动式溢流阀  
Tamper-resistant Differential  
Area Poppet-Type Relief Valve

### 2 规格 Size

08=08 规格

### 3 弹簧调压范围 Spring Ranges

4=50-400psi(3.45-27.59bar)  
Preset:200psi(13.8bar)  
7=150-700psi(10.34-48.3bar)  
Preset:350psi(24bar)  
13=250-1300psi(17.24-89.6bar)  
Preset:650psi(45bar)  
26=250-3300psi(17.24-227.59bar)  
Preset:1650psi(114bar)

### 4 设定压力 Setting In Bar

空白 Blank= 预设定 Preset  
例 Example:0160=160Bar

### 5 阀块油口 Body Porting

空白 Blank= 不带阀块 None  
4T=SAE4  
6T=SAE6  
2G=G 1/4  
3G=G 3/8

※ 阀块详见章节 K-1  
其它螺纹油口也是可选择的  
Other Porting is Available

E

## 安装尺寸 INSTALLATION DIMENSIONS

Unit=Millimeters

